

® colpac^c

FOOD PACKAGING CREATIVITY

CATALOGUE



SINCE 1937

Food packaging plays a fundamental part in today's society. Our role is to make sure that each piece of packaging protects, preserves and promotes your food whilst also delivering on your environmental goals.







FOOD PACKAGING CREATIVITY

COLPAC LTD.

Enterprise Way, Maulden Road, Flitwick,
Bedfordshire, MK45 5BW, England, UK.

Registered in England 00326182

Registered office address as above.

CONTACT US



+44 (0)1525 712 261



sales@colpacpackaging.com



View our full range and keep up-to-date
with our latest news and offers at

www.colpacpackaging.com



For our full Terms & Conditions of Sale visit:

www.colpacpackaging.com/terms



This catalogue is printed
on FSC-certified paper.

For our full environmental policy and more
information on our green credentials visit
www.colpacpackaging.com/our-commitment/

All Colpac Limited original products displayed in this catalogue are protected by Intellectual Property Rights, including copyright and unregistered design rights and they may also be the subject of one or more registered designs or patents (or applications for such rights) where appropriate. Colpac Limited reserves all rights in the displayed products and no licence is granted under those rights unless there is a written agreement to the contrary.

Disclaimer. The information contained in this catalogue is, to the best of our knowledge, accurate and reliable as of the date of publication. We do not, however, assume any liability whatsoever for the accuracy and completeness of the information. All images used are for illustrative purposes only and are subject to colour and graphical image change without notice or consent. We reserve the right to modify specifications without prior notice or consent where deemed necessary or appropriate. E&OE.



CONTENTS

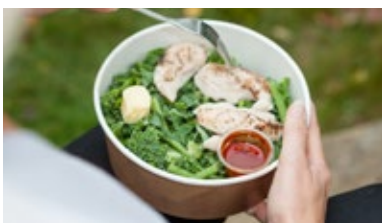
INTRODUCTION

4-13



SANDWICH PACKS

14-29



CHILLED FOOD TO GO

30-39



HOT FOOD TO GO

40-53



DELIVERED FOOD

54-55



TRAVEL

56-57



BAKERY

58-59



DRINKS

60-61



LABELS & STICKERS

62-63



PARTY & GIFT

64-77



MACHINERY

78-89

INDEX

90

FOOD PACKAGING CREATIVITY

Colpac has been at the forefront of the food packaging industry for over 80 years. Our expertise as a specialist paperboard packaging manufacturer and our comprehensive knowledge of the international food market has allowed us to play a vital and increasingly global role in the evolution of the food packaging industry.

With experience in consistently creating innovative, first to market solutions, we continue to pioneer new materials and designs to drive change throughout our industry, seeking to offer the best possible solution for sustainability and functionality. Innovation and environmental commitment are integral to our historical and ongoing business activity. Collaboration with suppliers, consultants and other industry leaders has always been key to ensuring we can place our products on the market with confidence.

Extensive market research helps us to keep our finger on the pulse of current and anticipated food and consumer trends. Working as a global provider, we understand the factors that influence packaging, from differences in humidity to the impact of food types on the material itself. Partnering with our customers and suppliers across the world is key to our market understanding and keeps us ahead of the curve.

The breadth of this market knowledge is strengthened by our on-site manufacturing capabilities. With everything under one roof, we can thoroughly test our products and provide our customers with a profound understanding of the manufacturing processes and materials used. This also enables us to create customised solutions which meet the specific needs of our customers.

As we look forward to the year ahead, environmental challenges and consumer choices will undoubtedly continue to shape the development of our solutions. Our dedication to this industry and our customers will ensure that our company stands the test of time and continues to be a global success.

Food packaging plays a fundamental part in today's society. Our role is to make sure that each piece of packaging achieves its functional and aesthetic objectives and adheres to vital environmental criteria.

Colpac's current and future designs are here to meet consumer needs and heightened environmental awareness. Our packaging provides a necessary barrier to contamination, extends shelf-life and reduces food waste and adheres to end-of-life regulations at point of disposal. These are just some of the criteria that need to be considered when designing and manufacturing on-the-go food packaging.

"I am proud to be at the helm of a company that has ceaselessly worked to meet the diverse needs of our customers and set a benchmark for our industry."



Neil Goldman
Managing Director

SINCE 1937



OUR VISION

To be the global leader in niche, added-value food packaging solutions, underpinned by our innovation, quality, responsiveness to customer needs and green credentials.



OUR MISSION

To provide a comprehensive range of innovative food packaging solutions to customers around the world, working to exacting manufacturing standards in terms of quality, health and safety, hygiene, customer service and the environment.

OUR COMMITMENT

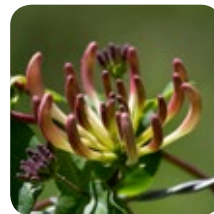
Folly Wood, Flitwick. Colpac is an investor level member of the Wildlife Trusts

Colpac is committed to mitigating our impact on the environment, both in our actions as a business and in the materials we use to produce packaging.

Our ISO: 14001 accreditation means that we make sure environmental responsibility is driven into our daily practices. From recycling 100% of our board waste to implementing multiple on-site recycling options, we have identified clear objectives to monitor the impact of our activities and ensure we are always improving our environmental performance.

Colpac holds many other credentials (see below) and we are proud to have achieved excellent results in the audits associated with these standards. As members of Sedex, OPRL and the British Sandwich Association, we work with and work to influence our industry. This year we retained our BRC AA grade - the highest announced audit grade achievable - for the fourth year running.

We look to source as locally as possible to reduce our carbon footprint. We participate in schemes such as Woodland Trust, a carbon capture initiative, to further reduce the environmental impact of manufacturing. We also take part in local carbon off-setting schemes and partner with the Bedfordshire, Cambridgeshire and Northamptonshire Wildlife Trust to protect our local wildlife.



OUR ENVIRONMENTAL CERTIFICATIONS



Provenance isn't just about where the materials come from and their supply chain, it's also about the accreditations to prove they're safe for your use and for the environment.



Visibility is essential for fresh produce packaging. Our products are designed to show off the vibrant food developments in vegan, vegetarian and plant-based foods.



Hot food-to-go continues its rapid growth. Our packaging is developed to harness the technology and materials that enable delivery of these exciting new menus.



Delivering ready to eat foods, our ranges cover every eventuality, ensuring your food arrives as intended.

OUR EXPERTISE

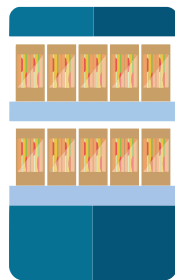
Innovation is at the heart of the Colpac brand and with more than 80 years in the packaging industry, this is more than just a word.

It's about...

HOW WE DESIGN

With over 450 stock lines, we hold almost 200 registered designs, patents and trademarks, and have in excess of 16,000 designs in our database.

We take every point in the supply chain into account in our designs to ensure we get the right solution for our customers.



It's about...

ACCESS TO MATERIALS AND OUR MANUFACTURING PROCESSES

Packaging is not just about design, it is about materials and manufacturing expertise. With a highly experienced team, bringing together everything from years of industry experience to higher academic qualifications, we can provide the breadth and depth of knowledge required by our customers.

We have access to materials and processes before they become mainstream. This means that we can bring food packaging solutions to the market before their time and our brands such as Zest™ Eco-Packaging and Fuzione® are testament to this.

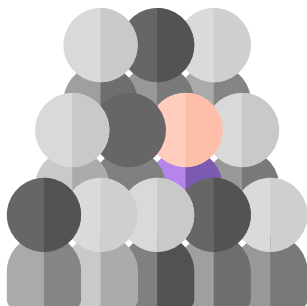


It's about...

OUR MARKET KNOWLEDGE

From reviewing market data to food safaris, we use insight to help identify packaging needs, anticipate market trends and work with early adopters and influencers.

We partner with other industry leaders, like-minded companies and consultants with specific insight who help to inform our innovation.



It's about...

HELPING YOU STAND OUT FROM THE CROWD

Our in-house product design and graphics teams can create the look and feel you want for your packaging to make your product stand out.

Whether it is a bespoke design incorporating new materials or an eye-catching design to promote your brand, we are here to offer you advice and create solutions tailored to your needs.



MADE FROM RECYCLED MATERIALS
COATED AND UNCOATED BOARD

ANTI-MIST WINDOW OR LID
SUITABLE FOR
HOT CABINETS
WATER-BASED COATING
RECYCLABLE

KRAFT BOARD

COMPOSTABLE
DUAL OVENABLE
SUITABLE FOR
MICROWAVE
AND OVEN
HOME COMPOSTING

COMPOSTABLE
EN13432 STANDARD

FREEZER SAFE

OUR MATERIALS

GREASE RESISTANT
WHITE & BLACK BOARD

LAMINATED BOARD
SUITABLE FOR
HOT FILL
PEFC CERTIFIED BOARD
MATT, GLOSS OR HIGH-GLOSS UV FINISH

HEAT SEALABLE
HEAT SEALABLE FILM
WET STRENGTHS
SUITABLE FOR MODIFIED
ATMOSPHERE PACKAGING (M.A.P.)

RPET LIDS
FSC®
CERTIFIED
BOARD

OUR CERTIFICATIONS



OUR SUSTAINABLE ACTIVITY

Innovating environmentally responsible food packaging solutions has been at the centre of our business since we began, and as consumer trends, legislation and infrastructural capabilities continue to evolve, so do we.



Recycled materials

pioneering recycled content in packaging; Fuzione® lids contain a minimum of 90% rPET.



Recyclable materials

We work with the waste industry to see exactly how our products perform through the recycling process.

FSC and PEFC certified board

available across a growing number of stock lines and our entire Party & Gift range including our new FSC toys.



Plastic reduction

Colpac leads in this area: Zest™ Eco-Packaging was launched to great acclaim in 2017 as being the first range to feature an effective water-based grease barrier.



Compostable materials

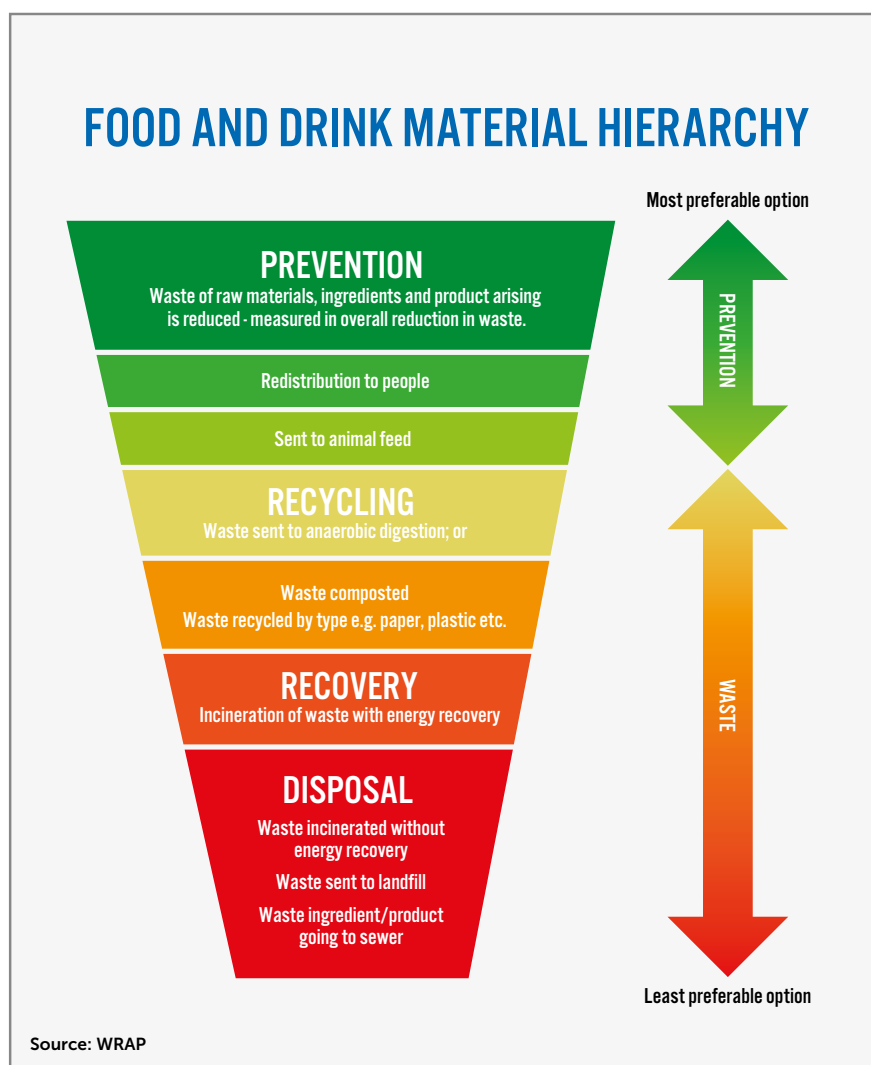
Colpac was one of the first to market with compostable products in the 1990s. We look to build upon standards such as EN13432 to ensure that products can and do fit downstream waste facilities.

Prevention is the most preferable option in the WRAP Food and Drink Material Hierarchy and, as a company, we approach this from many angles.

We optimise packaging design through value engineering, including for example light weighting packs to reduce the amount of materials used in our packaging, and the resources needed to transport them.

We also offer solutions that directly correspond to the UN's Sustainable Development Goal 12 to reduce food waste by extending shelf life. These include coatings or laminating films for our Modified Atmosphere Packaging. You can find out more about this on pages 80-81 of the catalogue.

To address end of life options for our packaging, we have a diverse range of solutions that are recyclable, contain recycled content of varying percentages, and are commercially compostable. We have a wide range of plant-based, polymer and non-polymer materials available for consideration and continue to proactively develop new alternatives. We have the know-how to use these efficiently and effectively.



We are also actively engaged with the waste industry to ensure that our packaging meets waste recovery requirements. We invest in understanding the full recycling or composting journey of our products, following them through different waste management facilities to make sure we can place them on the market with confidence and maximise recovery.

Our international experience shows that environmental standards and requirements are not characterised by a one-size-fits-all solution, and as such, we provide a wide range of solutions that combine the latest in sustainable materials and manufacturing. Our range of food packaging addresses the requirements and environmental issues that we are faced with, be that sustainable sourcing, carbon emissions, reduction in plastic or extending shelf life to reduce food waste.

OUR BRANDS & RANGES

Our brands and ranges comprise of paperboard food packaging solutions suitable for the retail and foodservice industries around the world.



- Recyclable and commercially compostable EN13432 board
- Commercially and home compostable window
- Innovative water-based coating



- 3 trays - one lid fits all
- Space efficient, nestable, stackable
- Freezable & microwaveable



TRAVEL



MULTI-FOOD POTS



Newsprint
SUPA SNAX



clasp®



CAFÉ COLLECTION



appealable
Resealable to keep food fresh



savori™

- Heat retaining properties
- Eat straight away from the packaging
- Suitable for hot cabinets
- Fluted board – great texture



combione®

rPet LIDS MADE
FROM A MINIMUM OF
90%
RECYCLED
PLASTIC



fuzone®

NEW
IMPROVED DESIGN
FOR THE MEDIUM
AND LARGE TRAYS
AND LIDS



COOK PAC®

- Microwaveable & ovenable
- Available in same day and heat seal versions



MACHINERY & LONGER EXTENDED SHELF LIFE PACKAGING

SANDWICH PACKS

With sandwiches topping the league tables as our go to lunch option, we manufacture a range of sandwich packaging that is unrivalled in the market.

From sandwiches to wraps, bagels to baguettes, our sandwich packaging spans a range of styles, sizes, materials and barrier properties to suit all requirements. Our range extends from the sustainable Zest™ - Eco Packaging to solutions that extend shelf life through self-sealing, heat-sealing and Modified Atmosphere Packaging (M.A.P.)

Key Attributes

- Spans a variety of styles, sizes, materials and barrier options
- Range of options to suit contents, covering all food trends from vegan to open sandwiches
- Sustainable solutions from recyclable to compostable
- Short shelf-life for same-day consumption to heat-sealed and M.A.P. for longer and extended shelf-life
- Options to add custom print to highlight branding

CAFÉ
COLLECTION

NEW



Front Loading Sandwich Packs

01ST21P1 (Printed kraft effect)
suitable for 2 standard sandwiches

✚ 123 x 52 x 123mm
📦 500



01ST21P2 (Printed kraft effect)
suitable for 2 deep-filled sandwiches

✚ 123 x 72 x 123mm
📦 500



Rear Loading Sandwich Packs

01ST11WK

suitable for 2 standard sandwiches

✚ 123 x 52 x 123mm

01ST11W2

suitable for 2 deep-filled sandwiches

✚ 123 x 72 x 123mm

01ST11K3

suitable for 3 standard sandwiches

✚ 123 x 82 x 123mm
📦 500



**01ST11KC** (Printed kraft effect)**Zest™ Rear Loading Sandwich Pack**

suitable for 2 deep-filled sandwiches

✚ 123 x 72 x 123mm

📦 500

**01ST11WP****White Rear Loading Sandwich Pack**

suitable for 2 deep-filled sandwiches

✚ 123 x 72 x 123mm

📦 500

**BESPOKE PACKAGING**

Our in-house graphics and construction team specialise in packaging design and bring your products to life with individual customised solutions.

**01ST11CB** (Brown Earth)**01ST11CS** (Slate Grey)**01ST11CK** (Khaki Leaf)**Rear Loading Sandwich Packs**

suitable for 2 deep-filled sandwiches

✚ 123 x 72 x 123mm

📦 500

**01ST11EL****Elegance Rear Loading Sandwich Pack**

suitable for 2 deep-filled sandwiches

✚ 123 x 72 x 123mm

📦 500

**01MST11K** (Kraft)**Mini Sandwich Pack**

suitable for 2 x 1/4 sized sandwiches

✚ 88 x 55 x 88mm

📦 500

**01ST61TE****Elegance Square-Cut Sandwich Pack**

suitable for 2 deep-filled sandwiches

✚ 125 x 77 x 72mm

📦 500

**01ST61CS** (Slate Grey)**Square-Cut Sandwich Pack**

suitable for 2 deep-filled sandwiches

✚ 125 x 77 x 72mm

📦 500

**01SOFATR** (Kraft)**Sofa Sandwich Pack**

suitable for 2 deep-filled sandwiches

✚ 140/125 x 75/65 x 20/70mm

📦 500

**01ST61TK** (Kraft)**Square-Cut Sandwich Pack**

suitable for 2 deep-filled sandwiches

✚ 125 x 77 x 72mm

📦 500



LONGER LIFE SANDWICH PACKS



appealable

01ST50PT (Wildlife design)

Appealable Sandwich Pack

suitable for 2 deep-filled sandwiches

✚ 125.5 x 75/65 x 125.5mm

📦 500



01ST50PK (Printed kraft effect)

Appealable Sandwich Pack

suitable for 2 deep-filled sandwiches

✚ 125.5 x 75/65 x 125.5mm

📦 500



Resealable to keep food fresh

The images featured on the Wildlife pack were taken at Folly Wood, part of Flitwick Moor, close to our factory. Colpac supports the Wildlife Trusts' vital conservation work.

Zest™
ECO-PACKAGING

Zest™ Heat Seal Sandwich Packs

The Zest™ Heat Seal range
is the next generation of
sustainable packaging

- Recyclable and sustainably sourced board, commercially compostable to EN13432
- Moisture and grease resistance achieved through innovative water-based coating
- Heat sealable (without the need for plastic coating and laminates)
- Sealable on a large scale by food manufacturers or using Colpac's range of heat sealing equipment
- Cellulose window commercially compostable to EN13432 and home composting certified



01ST24Z6

(Printed kraft effect)

NEW

Zest™ Heat Seal Sandwich Pack 68/58

suitable for 2 standard sandwiches

✚ 125.5 x 68/58 x 125.5mm

📦 500



01ST24Z7

(Printed kraft effect)

NEW

Zest™ Heat Seal Sandwich Pack 78/68

suitable for 2 deep-filled sandwiches

✚ 125.5 x 78/68 x 125.5mm

📦 500



01ST23ZH

(Printed kraft effect)

NEW

Zest™ Heat Seal Sandwich Pack 77/65

suitable for 2 deep-filled sandwiches

✚ 119.5 x 77/65 x 119.5mm

📦 500



01ST61ZH

(Printed kraft effect)

NEW

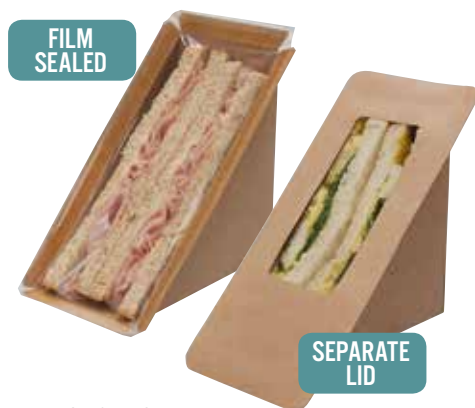
Zest™ Heat Seal Square-Cut Sandwich Pack

suitable for 2 deep-filled sandwiches

✚ 125 x 77 x 72mm

📦 500





Base: 01ST48K1 (Printed kraft effect)

Lid: 01ST48L1 (Printed kraft effect)

Front Loading Standard Sandwich Pack

suitable for 2 standard sandwiches

✚ Base: 125.5 x 65/55 x 125.5mm

Lid: 198.9 x 90mm

📦 Base: 500

Lid: 500



HEAT SEAL



Base: 01ST48K2 (Printed kraft effect)

Lid: 01ST48L2 (Printed kraft effect)

Front Loading Deep Filled Sandwich Pack

suitable for 2 deep-filled sandwiches

✚ Base: 125.5 x 75/65 x 125.5mm

Lid: 198.9 x 100mm

📦 Base: 500

Lid: 500



HEAT SEAL



Heat Seal and M.A.P. technology can increase shelf life meaning your packaging can play a part in reducing food waste.

(see page 78-81 for more information)



01ST236K

(Kraft PE board)

01ST236P

(Printed kraft effect PE board)

01ST23P6

(Printed design PE board)

68/56 Sandwich Packs

suitable for 2 standard sandwiches

✚ 119.5 x 68/56 x 119.5mm

📦 500



HEAT SEAL



01ST23CP

(Kraft PE board)

01ST237P

(Printed kraft effect PE board)

01ST23P7

(Printed design PE board)

77/65 Sandwich Packs

suitable for 2 deep-filled sandwiches

✚ 119.5 x 77/65 x 119.5mm

📦 500



HEAT SEAL



01ST2478 (Printed kraft effect PE board)

78/68 Sandwich Pack

suitable for 2 deep-filled sandwiches

✚ 125.5 x 78/68 x 125.5mm

📦 500



HEAT SEAL

01ST61HK (Printed kraft effect PE board)

Square-Cut Sandwich Pack

suitable for 2 deep-filled sandwiches

✚ 125 x 77 x 72mm

📦 500



HEAT SEAL

ColMAP™

**MODIFIED
ATMOSPHERE
PACKAGING**



01ST29KE (Printed kraft effect)

77/65 M.A.P. Sandwich Pack (end opening)

suitable for 2 deep-filled sandwiches

✚ 119.5 x 77/65 x 119.5mm

📦 500



M.A.P.

01ST17K (Printed kraft effect)

77/65 M.A.P. Sandwich Pack (side opening)

suitable for 2 deep-filled sandwiches

✚ 119.5 x 77/65 x 119.5mm

📦 250



M.A.P.



FAST AND EASY TO FILL AND CLOSE ...



SCAN TO
WATCH VIDEO



01TS6SK

Single Clasp® CLIP

✚ Ø 43.5-50 x up to 165mm

📦 500



SCAN TO
WATCH VIDEO

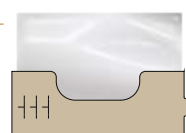


01TS6DK

Double Clasp® CLIP

✚ Ø 75-88.5 x up to 155mm

📦 500





POCKETS

NEW

- Time-saving and easy to use
- Integrated film pocket which is **pre-sealed** at each end
- Adjustable to fit various sized products
- Bespoke branding opportunities
- Add a label to customise the pack



SCAN TO
WATCH VIDEO

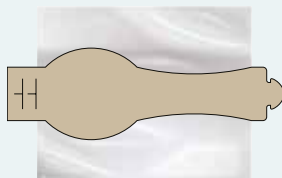


04CPRO6K NEW

Clasp Clip Pocket Roll

✚ Ø 99 - 103.5 x up to 160mm

📦 1000



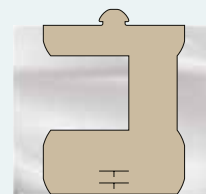
NEW

04CPWR6K NEW

Clasp Clip Pocket Wrap

✚ Ø 64 - 69 x up to 240mm

📦 1000

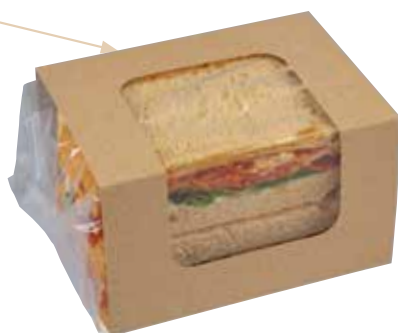
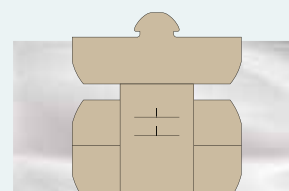


04CPB6K

Clasp® CLIP Pocket

✚ Ø 63.5 - 70 x up to 300mm

📦 500

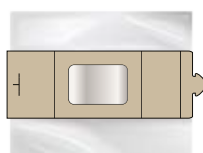


01CSS6K

Clasp® CLIP
Square-Cut Sandwich

✚ Up to 250 x 85 x 70mm

📦 500

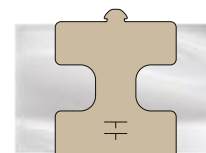


01CBG6K

Baguette Clasp® CLIP

✚ Ø 55.5-61.75 x up to 300mm

📦 500





THE ALL-IN-ONE FILM TO BOARD PACK

The all-in-one Clasp® packaging range is ideal for food to go. Simple and efficient to use, it is recyclable, made from printed kraft effect board, with a PET film that is easily removable from the board for separate disposal.



USE A LABEL TO CREATE TAMPER-EVIDENT CLOSURE
OR SEAL WITH OUR SEALING MACHINERY

- SEE PAGE 82



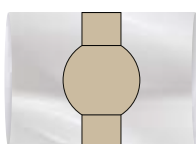
Pie

04CP6K

Clasp® SEAL Pie Sleeve

✚ Ø 115.5 x 55mm

📦 500



SCAN TO
WATCH VIDEO

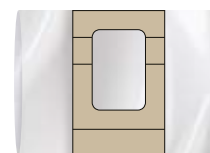


04BL6K

Clasp® SEAL Bloomer Sleeve

✚ Up to 180 x 85 x 70mm

📦 500



Swiss roll

04BG6K

Clasp® SEAL Tray

✚ Ø 83 x up to 350mm

📦 500



Panini

SCAN TO
WATCH VIDEO

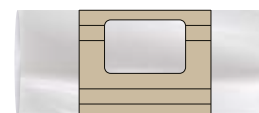


04SL6K

Clasp® SEAL Baguette Sleeve

✚ Up to 270 x 78 x 49mm

📦 500



WRAP PACKS

Our wrap range reflects the growth in this market sector in recent years, offering a variety of styles and materials to suit all your requirements.

Zest™
ECO-PACKAGING



01TS5KC (Printed kraft effect)

Zest™ Wrap Pack

suitable for 2 wrap halves

✚ 90 x 50 x 90/121mm

📦 500



HEAT SEAL



01TS5ZHS

(Printed kraft effect)

NEW

Zest™ Heat Seal Wrap Pack

suitable for 2 wrap halves

✚ 90 x 50 x 90/121mm

📦 500



01TCUPZK

(Printed kraft effect)

NEW

Zest™ Snack Cup

suitable for 2 wrap halves

✚ 80/60 Ø x 70/110mm

📦 1000



01TS5TKR

Wrap Pack

suitable for 2 wrap halves

✚ 90 x 50 x 90/121mm

📦 500



ELEGANCE
BLACK



01TS5TEL

Elegance Wrap Pack

suitable for 2 wrap halves

✚ 90 x 50 x 90/121mm

📦 500



01TS5TCB (Brown Earth)

01TS5TCS (Slate Grey)

Printed Wrap Packs

suitable for 2 wrap halves

✚ 90 x 50 x 90/121mm

📦 500



**01TS1KRA****Wrap Pocket**

suitable for 2 wrap halves

✚ 224 x 89mm

📦 1000

**01TS4WHI****White Sleeve**

suitable for 2 wrap halves or sausage roll

✚ 225 x 103mm

📦 1000

**01TS4KRA****Kraft Sleeve**

suitable for 2 wrap halves or sausage roll

✚ 225 x 103mm

📦 1000

**04TCUPK** (Kraft)**01TCUPWH** (White)**Snack Cups**

suitable for 2 wrap halves

✚ 80/60 Ø x 70/110mm

📦 1000

**01TS2KRA****Scoop**

suitable for 2 wrap halves

✚ 110 x 40 x 40/115mm

📦 1000

**01SG1PW****Scoop**

suitable for 2 wrap halves

✚ 81/70 x 49/43 x 71/107mm

📦 1000



appealable

NEW**01TS5SPK** (Printed kraft effect)**01TS5SPT** (Wildlife design)**Appealable Wrap Packs**

suitable for 2 wrap halves

✚ 90 x 50 x 90/121mm

📦 500

**Appealable Self-Seal
Longer Shelf-Life**

Appealable is our patented self-sealing sustainable wrap pack.

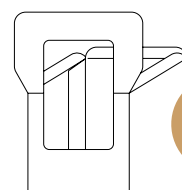
See page 33 for more information.

HEAT-SEAL**01TS5HK** (Printed kraft effect PE board)**01TS5HB** (Printed design PE board)**Heat Seal Wrap Packs**

suitable for 2 wrap halves

✚ 90 x 50 x 90/121mm

📦 500

**HEAT
SEAL****SUPPLIED
FLAT**

BAGUETTE & BAGEL PACKS



ELEGANCE
BLACK



01BG2REL

Elegance Open Baguette Tray

suitable for 10 inch baguettes

✚ 264/254 x 70/60 x 62/30mm

📦 500



ELEGANCE
BLACK



01BG2TEL

Elegance Baguette Box

suitable for 10 inch baguettes

✚ 274/254 x 80/60 x 62mm

📦 125



**01BR14****Kraft/White Reversible Strap**

Kraft one side, white the other, adjusts to suit various baguette widths

✚ 322 x 40/25mm

📦 2000

**04BGTBPE****Baguette Bag**

suitable for baguettes up to 12 inches

✚ 350 x 100 x 50mm

📦 1000



**CAN ALSO BE
HEAT-SEALED**

**04BAGTBG****Compostable Baguette Bag**

suitable for baguettes up to 12 inches

✚ 370 x 110 x 50mm

📦 1000

**01BG2RK****Open Baguette Tray**

suitable for 10 inch baguettes

✚ 264/254 x 70/60 x 62/30mm

📦 500

**01BG2TTK****Baguette Box**

suitable for 10 inch baguettes

✚ 274/254 x 80/60 x 62mm

📦 125

**01BA1KRA****Scoop**

suitable for a bagel, doughnut or tart

✚ 120 x 46 x 60/120mm

📦 1000

**BESPOKE PACKAGING**

Our in-house graphics and construction team specialise in packaging design and bring your products to life with individual customised solutions.



CONSTRUCTION
DESIGN



GRAPHIC
DESIGN



SAMPLE
MAKING



MATERIALS

HEAT-SEAL**01BG1HK** (Printed kraft effect PE board)**Heat Seal Baguette Box**

suitable for 8½ inch baguettes

✚ 240/220 x 80/60 x 62mm

📦 400



**HEAT
SEAL**



**SUPPLIED
FORMED**

BAGS & INSERTS



04BAGCPM

Medium Compostable Bag

✚ 215 x 215mm

📦 1000



04BAGCPL

Large Compostable Bag

✚ 250 x 250mm

📦 1000

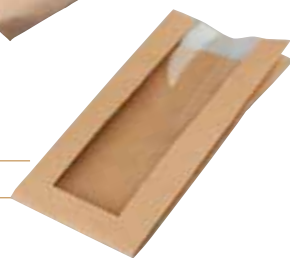


04BLBAGK

Bloomer Bag

✚ 290 x 150 x 60mm

📦 1000





ELEGANCE
BLACK



04DBAGK (Printed kraft effect)

04DBAGE (Elegance design)

Laminated Deli Bag

✚ 108 x 75 x 218mm

📦 250



**CAN ALSO BE
HEAT-SEALED**



BESPOKE PACKAGING

Our in-house graphics and construction team specialise in packaging design and brings your products to life with individual customised solutions.



CONSTRUCTION
DESIGN



GRAPHIC
DESIGN



SAMPLE
MAKING



MATERIALS



ELEGANCE
BLACK



04SABAGK (Printed kraft effect)

04SABAGE (Elegance design)

Laminated Sandwich Bags

✚ 155 x 73 x 220mm

📦 250



**CAN ALSO BE
HEAT-SEALED**



04SBAGPI

**Plastic rPET
Sandwich Bag Insert**

✚ 150 x 102 x 65mm

📦 1000



04TBAGK

Take Away Bag with Handle

✚ 180 x 89 x 216mm

📦 250



04GRWKR

Greaseproof Paper

✚ 400 x 315mm

📦 500



**SUITABLE FOR
OVEN**
(220C 30MINS)



KEY: ✚ Dimensions (LxWxHmm) 📦 Volume/Capacity 📦 Case Size

HOT SANDWICH PACKS

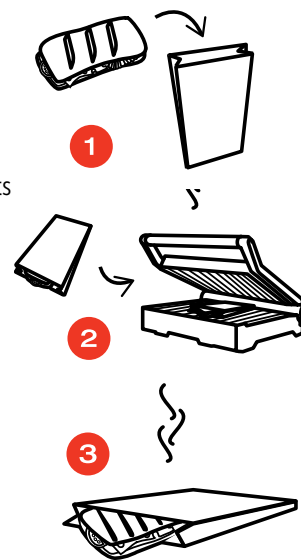


CONTACT GRILL BAGS

- Hygienic, avoiding cross contamination
- No contact with the grill, the bread gets its grilled stripes even through the bag
- Heat resistant paper
- Microwave heating
- Easy handling and serving

Also available in white*

*Subject to minimum order quantities



04OBAG1K

Contact Grill Bag 320mm

✚ 320 x 105 x 40mm

📦 600



04OBAG2K

Contact Grill Bag 200mm Square

✚ 200 x 170 x 40mm

📦 500



04OBAG3K

NEW

Contact Grill Bag 260mm

✚ 260 x 170 x 40mm

📦 500



savori™

Our savori™ range of packaging has been designed specifically for hot food to go.

- Good insulation to keep the food warmer for longer
- Ideal to eat straight from the packaging
- Suitable for hot cabinets

Suitable for hot cabinets upto 4hrs at 85°



04SQPPK

Square Hot Pillow Pack

✚ 200/145 x 150 x 55mm

📦 250



04PNPPK

Small Hot Pillow Pack

✚ 227/183 x 114 x 44mm

📦 250



04BGPPK

Large Hot Pillow Pack

✚ 285/230 x 110 x 55mm

📦 250



Easy open tear strip

NEW



04OBAG4K

NEW

Contact Grill Bag 200mm Rectangular

✚ 200 x 105 x 40mm

📦 1000



04OBAG5K

NEW

Contact Grill Bag 170mm

✚ 170 x 160 x 40mm

📦 600



01TC1KRA

Kraft Corner Pocket

✚ 130 x 130 x 32mm

📦 500



KEY: ✚ Dimensions (LxWxHmm) 🗑 Volume/Capacity 📦 Case Size

CHILLED FOOD TO GO

Chilled food to go options have expanded from simple salads on the go to complex meal solutions with high-end proteins and vegan options to respond to changing consumer demands.

Our chilled food range has kept pace with this, offering maximum content visibility via over the edge windows and a wealth of alternatives in shape and size for any requirement.

As well as easy to use closure options, sizes and shapes, we have fully laminated deli boxes that are suitable for breakfast and lunch options. Heat seal and modified atmosphere packaging options that can lengthen the shelf life of contents complete this diverse range.

Key Attributes

- Range of materials from recyclable to compostable
- Variety of sizes and styles to suit your chilled food go to requirements
- Lots of closure options: push tuck lids, heat seal and separate bases and lids
- Options to add custom print to highlight branding





Zest™ Eco-Packaging Chilled Food Range



The Zest™ Eco-Packaging chilled food range is the next generation of sustainable packaging



- Recyclable and sustainably sourced board, commercially compostable to EN13432
- Moisture and grease resistance achieved through an innovative water-based coating
- Cellulose window commercially compostable to EN13432 home compostable certified
- Over the edge window for maximum content visibility
- Simple closure
- Quick release tab for easy opening



Cellulose laminated deli box is suitable for proteins and fillings such as yoghurt and fruit.

01SP8ZS

NEW

Zest™ Deli Box
(Printed kraft effect)

- ✚ 80/60 x 80/60 x 70mm
- 🍷 250ml
- 📦 500



01SP7ZS

NEW

Zest™ Extra Small Salad Box
(Printed kraft effect)

- ✚ 117/97 x 80/60 x 50mm
- 🍷 375ml
- 📦 250



01SP6ZS

NEW

Zest™ Small Salad Box
(Printed kraft effect)

- ✚ 135/115 x 90/70 x 50mm
- 🍷 500ml
- 📦 250



01SP1AZS

NEW

Zest™ Medium Salad Box
(Printed kraft effect)

- ✚ 160/140 x 120/100 x 50mm
- 🍷 825ml/ 29 UK fl.oz
- 📦 250



01SP4ZS

NEW

Zest™ Deep Salad Box
(Printed kraft effect)

- ✚ 129/95 x 119/85 x 85mm
- 🍷 900ml
- 📦 250



01SP2AZS

NEW

Zest™ Large Salad Box
(Printed kraft effect)

- ✚ 200/180 x 120/100 x 50mm
- 🍷 1000ml/ 35 UK fl.oz
- 📦 200



SALAD BOXES

NEW



Kraft PE deep salad box

Distinctive new salad box design

- Recyclable kraft board
- Looks larger than 900ml volume
- Fits neatly in consumers hand
- Simple push tuck closure
- Over edge window for greater content visibility

01SP4KR

NEW

Kraft PE Deep Salad Box

✚ 129/95 x 119/85 x 85mm

🍷 900ml

📦 250



PE BARRIER - IDEAL FOR SALADS WITH DRESSING!

The PE coated salad boxes are recyclable and are produced in kraft board, with a PE coating and over edge window. The packs are suitable for salads with dressings.



01SP1APK

NEW

Kraft PE Medium Salad Box

✚ 160/140 x 120/100 x 50mm

🍷 825ml/ 29 UK fl.oz

📦 250



01SP2APK

NEW

Kraft PE Large Salad Box

✚ 200/180 x 120/100 x 50mm

🍷 1000ml/ 35 UK fl.oz

📦 200



ELEGANCE
BLACK



01SP1AEL

NEW

Elegance Salad Box

✚ 160/140 x 120/100 x 50mm

🍷 825ml/ 29 UK fl.oz

📦 250



appealable

Appealable Self-Seal Longer Shelf-Life Salad Box

Appealable is our patented self-sealing sustainable salad box

- Recyclable and sustainably sourced board, commercially compostable to EN13432
- Sealable and resealable via a food-safe adhesive strip
- Sealable without the use of sealing machinery
- Moisture and grease resistance achieved through a water-based coating
- Commercially compostable window to EN13432
- Overedge window for maximum content visibility

NEW



01SP1ASK

NEW

Appealable Salad Box
(Printed kraft effect)

✚ 160/140 x 120/100 x 50mm
 🍷 825ml/ 29 UK fl.oz
 📦 250



EASY
TO OPEN
& CLOSE

Zest™

ECO-PACKAGING



Zest™ Heat Seal Salad Box

The Zest™ Heat Seal salad box, the next generation of sustainable packaging

- All the attributes of the same day packs (page 31)
- Heat sealable (without the need for plastic coating and laminates)
- Sealable on a large scale by food manufacturers or using Colpac's range of kitchen heat sealing equipment



NEW

01SP1ZH

NEW

Zest™ Heat Seal Salad Box
(Printed kraft effect)

✚ 160/140 x 120/100 x 50mm
 🍷 825ml/ 29 UK fl.oz
 📦 250



HEAT
SEAL



01SP1HK

Heat Seal PE Salad Box
(Printed kraft effect)

✚ 160/140 x 120/100 x 50mm
 🍷 825ml/ 29 UK fl.oz
 📦 250



HEAT
SEAL

Modified Atmosphere Packaging (M.A.P.) Salad Box

The M.A.P. salad box can extend shelf life beyond that of same day and heat seal packaging

- Extended shelf life means less frequent deliveries or that product can be supplied to sites further away
- Can reduce food waste through extending shelf life
- See page 89



01SP3MAF

M.A.P. Salad Box
(Printed kraft effect)

✚ 175/155 x 135/115 x 65mm
 🍷 1340ml/ 47 UK fl.oz
 📦 250



M.A.P.

FUZIONE®

New improved design for the medium and large trays and lids.

The new lid and base design makes the lid easier to use and improves product stability in transit and on shelf. The change in design also makes it easier to use labels or custom printing for greater on shelf-impact.

rPET LIDS MADE
FROM A MINIMUM OF

90%

RECYCLED
PLASTIC

NEW IMPROVED FEATURES FOR MEDIUM AND LARGE TRAYS

1. Corner grips create an easier closure and tighter seal
2. Stack guides on all four sides of the lid align multiple packs for improved vertical stacking and superb on-shelf impact
3. Improved aesthetics and opportunities for custom branding/printing
4. Smooth lid is perfect for labelling for branding or tamper-evidence





Tray: **01FUZBKM**
Lid: **04FUZBML**

NEW

Medium Fuzione® Tray & Lid (Printed kraft effect)

✚ 160/140 x 120/100 x 50mm
 🍷 825ml/ 29 UK fl.oz
 📦 500



Tray: **01FUZBKL**
Lid: **04FUZBLL**

NEW

Large Fuzione® Tray & Lid (Printed kraft effect)

✚ 190/170 x 140/120 x 45mm
 🍷 1053ml/ 37 UK fl.oz
 📦 500



SUITABLE
FOR DRY
PRODUCTS
ONLY

Tray: **01FUZMNT**
Lid: **04FUZSLA**

Mini Fuzione® Tray & Lid (Printed kraft effect)

✚ 108/95 x 89/74 x 40mm
 🍷 330ml/ 11.6 UK fl.oz
 📦 500



Tray: **01FUZSQ**
Lid: **04FUZSQL**

Square Fuzione® Tray & Lid (Printed kraft effect)

✚ 149/129 x 149/129 x 45mm
 🍷 870ml/ 30.6 UK fl.oz
 📦 500



Tray: **01FUZST**
Lid: **04FUZSLA**

Small Fuzione® Tray & Lid (Printed kraft effect)

✚ 107/84 x 89/63 x 72mm
 🍷 522ml/ 18.4 UK fl.oz
 📦 500



LAMINATE
PACK WITH SIDE
WINDOW FOR
FULL VISIBILITY

Tray: **01FFNPK**
Lid: **04FUZSLA**

Small Fuzione® Finestra Tray & Lid
(Printed kraft effect)

✚ 108/84 x 89/63 x 72mm
 🍷 525ml/ 18.5 UK fl.oz
 📦 500



BESPOKE PACKAGING

Our in-house graphics and construction team specialise in packaging design and bring your products to life with individual customised solutions.

COMBIONE®

Two materials fused into a one-piece solution

The paperboard bases are PE coated and the anti-mist lids are made from recycled PET up to 90%.

The packs offer excellent visibility of food items such as sushi, noodles, rice and salad.



FEATURES

1. Paperboard base and rPET anti-mist fused together
2. Easy to handle and ideally suited for both food manufacturers and big volume caterers
3. Lid and base can be easily separated for recycling.
4. Smooth lid is perfect for labelling for branding or tamper-evidence



combione®



01COMKRA

Large Combione® (Printed kraft effect)

✚ 190/170 x 147/127 x 52mm

⚡ 1280ml/ 45 UK fl.oz

📦 200



01COMBLA

Black Large Combione®

✚ 190/170 x 147/127 x 52mm

⚡ 1280ml/ 45 UK fl.oz

📦 200



01COMKTB

Medium Combione® (Printed kraft effect)

✚ 190/170 x 147/127 x 45mm

⚡ 1110ml/ 39 UK fl.oz

📦 200



01COMBKB

Black Medium Combione®

✚ 190/170 x 147/127 x 45mm

⚡ 1110ml/ 39 UK fl.oz

📦 200



BESPOKE PACKAGING

Our in-house graphics and construction team specialise in packaging design and bring your products to life with individual customised solutions.



01COMKRC

Small Combione® (Printed kraft effect)

✚ 160/140 x 127/107 x 52mm

⚡ 910ml/ 32 UK fl.oz

📦 200



01COMBLC

Black Small Combione®

✚ 160/140 x 127/107 x 52mm

⚡ 910ml/ 32 UK fl.oz

📦 200



MULTI-FOOD POTS



04KPT470

470ml Multi-Food Pot (Printed kraft effect)

- ✚ Pot: 112/94 Ø x 71/71mm
PP Lid: 111.5 Ø x 8.5mm
- 📐 470ml/ 17 UK fl.oz
- 📦 500



04KPT550

550ml Multi-Food Pot (Printed kraft effect)

- ✚ Pot: 142/125 Ø x 53/75mm
PET Lid: 142 Ø x 27/23mm
- 📐 550ml/ 20 UK fl.oz
- 📦 250



04KPT700

700ml Multi-Food Pot (Printed kraft effect)

- ✚ Pot: 150/128 Ø x 68/89mm
PET Lid: 150 Ø x 20mm
- 📐 700ml/ 25 UK fl.oz
- 📦 150



04KP1000

1300ml Multi-Food Pot (Printed kraft effect)

- ✚ Pot: 187/159 Ø x 68/90mm
PET Lid: 187 Ø x 23mm
- 📐 1300ml/ 46 UK fl.oz
- 📦 150



Stagione®

.....a pack for all seasons

NEW

Stagione® offers three different sizes - 500ml, 750ml and 1000ml - 'one size fits all' lid options: kraft paperboard and plug fit rPET anti-mist lids complete the chilled food to go range.



04SEL0K1

NEW

Stagione® Kraft PP Lined Lid

✚ 170 x 120 x 18mm
 300



04SEL0P1

NEW

Stagione® PP Lid

✚ 172 x 120 x 10mm
 300



04SEL0P4

NEW

Stagione® rPET Anti-Mist Lid

✚ 172 x 120 x 10mm
 300



04SEB1K1

NEW

Stagione® 500ml Kraft PP Lined Tray*

✚ 170/152 x 120/100 x 41mm
 500ml / 17.5 UK fl oz
 300



04SEB2K1

NEW

Stagione® 750ml Kraft PP Lined Tray*

✚ 170/150 x 120/98 x 57mm
 750ml / 26 UK fl oz
 300



04SEB3K1

NEW

Stagione® 1000ml Kraft PP Lined Tray*

✚ 170/146 x 120/94 x 77mm
 1000ml / 35 UK fl oz
 300



* freezer/defrost applications should be tested to confirm suitability and pack integrity

KEY: ✚ Dimensions (LxWxHmm) 🍹 Volume/Capacity 📦 Case Size

HOT FOOD TO GO

In line with the expanding Hot Food to Go market, we have an extensive range of packaging solutions.

From products suitable for freezing, microwaves and ovens, to those suitable for hot hold cabinets, or grease resistant for takeaways, festivals and food-to-go, we have a solution for your requirements. Check the attributes of each product or talk to one of our packaging specialists for suitability.

Key Attributes

- Assortment for all occasions from breakfast and lunch to evening meals and delivery
- Range of materials and barriers to suit all your needs
- Variety of sizes and styles to maximise content visibility where required and provide secure lids for food on the go and delivery
- Range of disposal options from recyclability to compostability
- Custom design options to maximise brand impact

savori™

- Good insulation to keep the food warmer for longer
- Ideal to eat straight from the packaging
- Suitable for hot cabinets



Pot: 04HTP16K

Lid: 04HTL16K

Savori™ 450ML Hot Pot & Lid

- ✚ 115/90 Ø x 75mm
- 🔥 450ml/ 16 UK fl.oz
- 📦 250



Pot: 04HTP26K

Lid: 04HTL26K

Savori™ 750ML Hot Pot & Lid

- ✚ 150/128 Ø x 60mm
- 🔥 750ml/ 26 UK fl.oz
- 📦 250



MICROWAVEABLE SOUPER CUPS



Cup: 04S8CPK
Lid: 04S12PLK
PP Lid: 04S12PLC
225ml Souper Cup

225ml/ 8 UK fl.oz
 500



Cup: 04S12CPK
Lid: 04S12PLK
PP Lid: 04S12PLC
350ml Souper Cup

350ml/ 12 UK fl.oz
 500



Cup: 04S16CPK
Lid: 04S16PLK
PP Lid: 04S16PLC
450ml Souper Cup

450ml/ 16 UK fl.oz
 500



Cup: 04S26CPK
Lid: 04S2632L
750ml Souper Cup

750ml/ 26 UK fl.oz
 500



Cup: 04S32CPK
Lid: 04S2632L
900ml Souper Cup

900ml/ 32 UK fl.oz
 500



04SCCWS**

Small Souper Cup Wrap

225ml/8 UK fl.oz & 350ml/ 12 UK fl.oz
 1000



04SCCWM**

Medium Souper Cup Wrap

450 ml/ 16 UK fl.oz
 500



COMPOSTABLE SOUPER CUPS

SHOWN
 WITH SOUPER
 CUP WRAP



Cup: 04S08SCC
Lid: 04S12CLC
225ml Souper Cup

225ml/ 8 UK fl.oz
 500



Cup: 04S12SCC
Lid: 04S12CLC
350ml Souper Cup

350ml/ 12 UK fl.oz
 500



Cup: 04S16SCC
Lid: 04S16CLC
450ml Souper Cup

450ml/ 16 UK fl.oz
 500



Cup: 04S26SCC
Lid: 04S26CLC
750ml Souper Cup

750ml/ 26 UK fl.oz
 500



Cup: 04S32SCC
Lid: 04S26CLC
900ml Souper Cup

900ml/ 32 UK fl.oz
 500



*Subject to minimum order

** apply to product after heating

KEY: + Dimensions (LxWxHmm) Volume/Capacity Case Size

BOXES

The value of the street-food category has grown exponentially in recent years.

Trends and social media continuously shape this vital sector in the food industry. The number of stalls and the local food markets in the main cities of the world are hubs for tourists and locals.

The recipes from Asia, Africa and Europe, mix with the local cuisine in a very successful and vibrant way. Our responsibly sourced packaging caters for several types of foods and events all around the world.

Key Attributes

- Microwaveable and ovenable food boxes
- Recyclable and compostable options
- Available in printed and kraft version
- Custom design options to maximise brand impact



COMPOSTABLE MULTI-FOOD BOXES



04OR1CP

750ML Multi-Food Box

✚ 118/84 x 97/63 x 92mm

🔺 750ml/ 26 UK fl.oz

📦 250



04ORACP

800ML Multi-Food Box

✚ 125/110 x 118/90 x 64mm

🔺 800ml/ 28 UK fl.oz

📦 250



MICROWAVEABLE MULTI-FOOD BOXES

01OR1MK (Kraft)

750ML Multi-Food Box

✚ 118/84 x 97/63 x 92mm

🔺 750ml/ 26 UK fl.oz

📦 250

01OR2MK (Kraft)

985ML Multi-Food Box

✚ 185/167 x 103/90 x 58mm

🔺 985ml/ 34.5 UK fl.oz

📦 250



01OR1MW (White)

01OR1MB (Black)

750ML Multi-Food Boxes

✚ 118/84 x 97/63 x 92mm

🔺 750ml/ 26 UK fl.oz

📦 250



01OR2MW (White)

01OR2MB (Black)

985ML Multi-Food Boxes

✚ 185/167 x 103/90 x 58mm

🔺 985ml/ 34.5 UK fl.oz

📦 250



01ORAMK

800ML Multi-Food Box

✚ 125/110 x 118/90 x 64mm

🔺 800ml/ 28 UK fl.oz

📦 250



01ORBMK

1250ML Multi-Food Box

✚ 170/150 x 135/120 x 65mm

🔺 1250ml/ 44 UK fl.oz

📦 250



01OR3MK

1950ML Multi-Food Box

✚ 216/198 x 156/141 x 63.5mm

🔺 1950ml/ 68 UK fl.oz

📦 200



04OR2CP

985ML Multi-Food Box

✚ 185/167 x 103/90 x 58mm

🔺 985ml/ 34.5 UK fl.oz

📦 250



04ORBCP

1250ML Multi-Food Box

✚ 170/150 x 135/120 x 65mm

🔺 1250ml/ 44 UK fl.oz

📦 250



04OR3CP

1950ML Multi-Food Box

✚ 216/198 x 159/141 x 63.5mm

🔺 1950ml/ 68 UK fl.oz

📦 200



BOXES

TUCK TOP
FOOD TUBS**04FT1****500ml White Food Tub**

✚ 82/67 x Ø 75 x 108mm

⚠ 500ml/ 17.5 UK fl.oz

📦 500

**04FT1K****500ml Kraft Food Tub**

✚ 82/67 x Ø 75 x 108mm

⚠ 500ml/ 17.5 UK fl.oz

📦 500

**04FT2****750ml White Food Tub**

✚ 99/79 x Ø 95 x 98.5mm

⚠ 750ml/ 26 UK fl.oz

📦 500

**04FT2K****750ml Kraft Food Tub**

✚ 99/79 x Ø 95 x 98.5mm

⚠ 750ml/ 26 UK fl.oz

📦 500

**04FT3****900ml White Food Tub**

✚ 102/82 x Ø 95 x 122.5mm

⚠ 900ml/ 32 UK fl.oz

📦 500



COOKPAC® SAME DAY

01CKPS1

432ml Cookpac® Sameday

✚ 101/85 x 101/85 x 50mm
 ▲ 432ml/ 15 UK fl.oz
 ▢ 500



01CKPS2

583ml Cookpac® Sameday

✚ 116/100 x 116/100 x 50mm
 ▲ 583ml/ 21 UK fl.oz
 ▢ 250



01CKPS3

702ml Cookpac® Sameday

✚ 141/125 x 96/80 x 60mm
 ▲ 702ml/ 25 UK fl.oz
 ▢ 200



01CKPS4

1061ml Cookpac® Sameday

✚ 141/125 x 141/125 x 60mm
 ▲ 1061ml/ 37 UK fl.oz
 ▢ 200



01CKPS5

1540ml Cookpac® Sameday

✚ 201/185 x 141/125 x 60mm
 ▲ 1540ml/ 54 UK fl.oz
 ▢ 200



Also available
with window*



COOKPAC® HEAT-SEAL

ONE-PIECE PAPERBOARD PACK

The Cookpac® range has been specifically developed for the demands of the retail marketplace.

The Cookpac® range caters for short shelf life with the same day range and longer shelf life with the heat sealed range. The products are recyclable, with the ability to go from freezer to oven or microwave, it caters perfectly for the ready meal and hot counter retail markets.

Key Attributes

- Ovenable and microwaveable
- Recyclable
- Single piece design, no separate lid required
- Self venting film available
- Variety of sizes including bespoke for the heat seal range
- Custom design available to highlight your brand



**COOKPAC® HEAT-SEAL
PACKS ARE MADE TO ORDER.**

(subject to minimum order quantities)



*Subject to minimum order quantities

KEY: ✚ Dimensions (LxWxHmm) ▲ Volume/Capacity ▢ Case Size

BOXES



01FC0WH

White Small Food Box

✚ 144 x 85 x 60mm

📦 500

01FC1WH

White Standard Food Box

✚ 178 x 106 x 70mm

📦 500

01FC3WH

White Large Food Box

✚ 228 x 125 x 78mm

📦 250



01BC2WH

White Square Food Box

✚ 130 x 130 x 62mm

📦 500



**01CSB1AK****Kraft Medium Clamshell**

+ 108/89 x 108/89 x 70mm

250

**01CSB1BK****Kraft Large Clamshell**

+ 135/115 x 125/105 x 75mm

250

**01FCB3KR****Kraft Multi-Food Box**

+ 250/220 x 125/95 x 60mm

150

**01FC0S****Ssupa Snax
Small Food Box**

+ 144 x 85 x 60mm

500

**01FC1S****Ssupa Snax
Standard Food Box**

+ 178 x 106 x 70mm

500

**01FC3S****Ssupa Snax
Large Food Box**

+ 228 x 125 x 78mm

250

**01CSB1BS****Ssupa Snax
Large Clamshell**

+ 135/115 x 125/105 x 75mm

250



savori™

**04CSB1CK****Savori™ Hot Food Clamshell**

+ 155/135 x 125/105 x 76mm

250

**04HFBOX****Savori™ Hot Food Box**

+ 150/120 x 130/100 x 75mm

1160ml/ 40 UK fl.oz

125

**01FCB3N****Newsprint Multi-Food Box**

+ 250/220 x 125/95 x 60mm

150



TRAYS

INTERCHANGEABLE TOWER TRAYS™

SWAP & STACK! SIX BOX COMBINATIONS

Use as a stand alone tray or combine these interchangeable trays to create a 'tower box'.



01TR1KR

TT1 Tower Tray

✚ 122/106 x 114/106 x 36/29.5mm

500



01TR2KR

TT2 Tower Tray

✚ 122/103 x 114/103 x 47.5/37mm

500



01TR3KR

TT3 Tower Tray

✚ 122/100 x 114/100 x 55.5/48mm

500



'CLIP'



Base: 01CVWMT*

PP Lid: 04CVISML*

Microwaveable C-vis® Tray

(Printed kraft effect)

✚ Base: 198/183 x 110/95 x 51mm

Lid: 220 x 132 x 17mm

900ml/ 31.5 UK fl.oz

250



Ovenable
version
available*



01CVS2IW*

C-vis® 2 Compartment Insert

divides C-vis® Tray in to 2 equal parts

250



**01HD1S**

Ssupa Snax
7" Open Ended Tray

✚ 179 x 42 x 40mm
📦 1000

**01HD2S**

Ssupa Snax
9" Open Ended Tray

✚ 230 x 70 x 50mm
📦 1000

**01HD1KR**

7" Kraft Open Ended Tray

✚ 179 x 42 x 40mm
📦 1000

**01HD2KR**

9" Kraft Open Ended Tray

✚ 230 x 70 x 50mm
📦 1000

**01HD3KR**

10" Kraft Open Ended Tray

✚ 250 x 80 x 50mm
📦 500

**01PT1S**

Ssupa Snax Slice Tray

✚ 172 x 180mm
📦 1000

**01PT1LKR**

Kraft Slice Tray with Lid

✚ 190 x 165 x 40mm
📦 500

**04GRWN**

Newsprint Greaseproof Paper

✚ 400 x 305mm
📦 500

**MICROWAVEABLE**

01MWVBXS (Base)

01MWVLDS (Lid)

Small Microwaveable Tray & Lid
(Printed kraft effect)

✚ Base: 125/110 x 125/110 x 46mm
Lid: 127 x 127 x 25mm

🔺 550ml
📦 500



**SUITABLE
HOT HOLD**



01MWVBXM (Base)

01MWVLDM (Lid)

Medium Microwaveable Tray & Lid
(Printed kraft effect)

✚ Base: 155/140 x 155/140 x 46mm
Lid: 157 x 157 x 25mm

🔺 800ml
📦 500



**SUITABLE
HOT HOLD**

TRAYS



WITH BLACK PE BARRIER

Creates a leak resistant barrier -
ideal for sauce-laden food!



01WTBLKR

Kraft/Black Large Open Tray

suitable for sauce-laden food

✚ 220/195 x 145/115 x 45mm

📦 250



01FCB1KR

Kraft Large Open Tray

✚ 220/190 x 115/85 x 45mm

📦 250



01CSTDK

Kraft Medium Open Tray

✚ 148/110 x 139/110 x 42mm

📦 500



01CSTCK

Kraft Small Open Tray

✚ 124/100 x 87/63 x 42mm

📦 500



Stagione®

.....a pack for all seasons

NEW
FOR 2020



Stagione® offers three different sizes - 500ml, 750ml and 1000ml - 'one size fits all' lid; vented kraft PP lined paperboard and plug fit PP lids complete the hot food to go range.



04SELOK1

NEW

Stagione® Kraft PP Lined Lid

✦ 170 x 120 x 18mm
✦ 300



04SELOP1

NEW

Stagione® PP Lid

✦ 172 x 120 x 10mm
✦ 300



04SELOP4

NEW

Stagione® rPET Anti-Mist Lid

✦ 172 x 120 x 10mm
✦ 300



Hot fill
below 60°C for
up to 2 hours
- not suitable for hot
lamps or cabinets



04SEB1K1

NEW

Stagione® 500ml Kraft PP Lined Tray*

✦ 170/152 x 120/100 x 41mm
✦ 500ml / 17.5 UK fl oz
✦ 300



04SEB2K1

NEW

Stagione® 750ml Kraft PP Lined Tray*

✦ 170/150 x 120/98 x 57mm
✦ 750ml / 26 UK fl oz
✦ 300



04SEB3K1

NEW

Stagione® 1000ml Kraft PP Lined Tray*

✦ 170/146 x 120/94 x 77mm
✦ 1000ml / 35 UK fl oz
✦ 300



01CSTDB

Black Open Tray

✦ 148/110 x 139/110 x 42mm
✦ 500



04SOTSQK

Savori™ Square Open Hot Tray

✦ 150/125 x 150/125 x 60mm
✦ 250



01FCB1N

Newsprint Small Open Tray

✦ 220/190 x 115/85 x 45mm
✦ 250



01FCB2N

Newsprint Large Open Tray

✦ 275/245 x 135/105 x 45mm
✦ 250



* freezer/defrost applications should be tested to confirm suitability and pack integrity

KEY: ✦ Dimensions (LxWxHmm) ✦ Volume/Capacity ✦ Case Size

CONES & SCOOPS



01COS2KR
Large Kraft Cone
with Dip Corner

✚ 212 x 354mm
📦 500



01COS1KR
Small Kraft Cone
with Dip Corner

✚ 168 x 279mm
📦 500



01CC2N
Newsprint
Large Paper Cone

✚ 190 x 230mm
📦 1000



01CO2S
Supa Snax
Large Cone

✚ 186 x 265mm
📦 500



04CC1N
Newsprint
Small Paper Cone

✚ 151 x 183mm
📦 1000



01CO1S
Supa Snax
Small Cone

✚ 147 x 210mm
📦 500



01CC1KR
Small Paper Cone

✚ 151 x 183mm
📦 1000



01CO1KR
Small Kraft Cone

✚ 147 x 210mm
📦 500



**01PCBOEN****835ml Popcorn/Sweet Carton**

✚ 86/62 x 86/62 x 155mm

⚡ 850ml/ 29.9 UK fl.oz

📦 500

**01PCBO1E****1170ml Popcorn/Sweet Carton**

✚ 92/63 x 92/63 x 195mm

⚡ 1170ml/ 41 UK fl.oz

📦 500

**01PCBO2E****1695ml Popcorn/Sweet Carton**

✚ 112/82 x 112/82 x 180mm

⚡ 1695ml/ 59 UK fl.oz

📦 500

**01CREPE****White Cone**

✚ 33/146 x 151mm

📦 1000

**01TDIPKR****Kraft Scoop with Dip Corner**

✚ 74/53.5 x 74/53.5 x 80.5/150mm

📦 500

**01SG1KRA****Medium Kraft Scoop**

✚ 81/70 x 49/43 x 71/107mm

📦 1000

**01SG1JKR****Large Kraft Scoop**

✚ 81/70 x 49/43 x 71/122mm

📦 1000

**01SG1SS****Ssupa Snax Small Scoop**

✚ 80/64 x 38/34 x 64/98mm

📦 1000

**01SG1S****Ssupa Snax Medium Scoop**

✚ 81/70 x 49/43 x 71/107mm

📦 1000

**01SG1JS****Ssupa Snax Large Scoop**

✚ 81/70 x 49/43 x 71/122mm

📦 1000

**01SG1XJS****Ssupa Snax Jumbo Scoop**

✚ 94/84 x 42/35 x 99/137mm

📦 1000



DELIVERED FOOD

Our delivered food range provides recyclable paperboard solutions for the catered food market, from solutions without windows to lidded designs we have one of the broadest ranges in the industry.

Talk to us about what your requirements are including compostable alternatives. NEW to the delivered food range is Stagione® which is perfect in shape, volume options and tight-fitting lids for the growing delivered meal market.

Key Attributes

- Recyclable board
- Nestable once constructed allowing space-efficient storage
- Range of sizes to cater for differing party requirements
- Easy-open sleeves with locking tabs for security
- Stagione® see page 51 for full details

Stagione
.....a pack for all seasons

PERFECT FOR
DELIVERED
FOOD

SEE PAGE

51



Base: **01LDLMBS** (Kraft base & sleeve)

rPET Lid: **04LDLML**

Medium Combination Platter

✚ 338/367 x 220/250 x 82mm

25



Base: **01PLVIZB** (Kraft base & sleeve)

PET Lid: **04PLVIZL**

Large Combination Platter

✚ 418/447 x 278/308 x 82mm

25



07LETDLU

'Let's Do Lunch' Label

✚ Ø 90mm

1000 (per roll)



LET'S DO LUNCH



BASES

01PLTMBS

Medium Platter Base

✚ 367/347 x 257/237 x 78mm

📦 25



01PLTLBS

Large Platter Base

✚ 467/447 x 328/308 x 78mm

📦 25



INSERTS

01PLTLQI

1/4 Insert for Large Platter Base/
1/2 Insert for Medium Platter Base

✚ 230/210 x 162/142 x 75mm

📦 50



01PLTLHI

1/2 Insert for Large Platter Base

✚ 324/304 x 230/210 x 75mm

📦 50



SLEEVES

01PLTMSL

Medium Platter Sleeve

✚ 402 x 260 x 82.5mm

📦 25



01PLTSL

Large Platter Sleeve

✚ 502 x 331 x 82.5mm

📦 25



POP OUT HANDLE



NESTABLE BASE FOR
EASY STACKING



LOCKING TABS

Secure locking system for
our slide-on/off sleeves

PLATTERS AND BASES
SOLD SEPARATELY SO
YOU CAN MIX AND MATCH



01PLTMWS

Medium Platter Sleeve with Window

✚ 402 x 260 x 82.5mm

📦 25



01PLTLWS

Large Platter Sleeve with Window

✚ 502 x 331 x 82.5mm

📦 25



01PLTMTS

Medium Platter Box with Window

✚ 402 x 260 x 82.5mm

📦 25



01PLTLTS

Large Platter Box with Window

✚ 482 x 331 x 82.5mm

📦 25



TRAVEL

NEW



This range provides a more focused approach to packaging for the travel sector, suitable for air, rail and sea. It's in stock and ready to go!

With our range of stock products for the travel sector there will be no wait or extended delivery times for listed products.

Response times are minimised with design and manufacturing under one roof. Our solution provides true flexibility to meet your needs and delivery expectations.

Manufactured from recyclable and compostable paperboard, the boxes are perfect for first and second serve options as well as retail snacks.



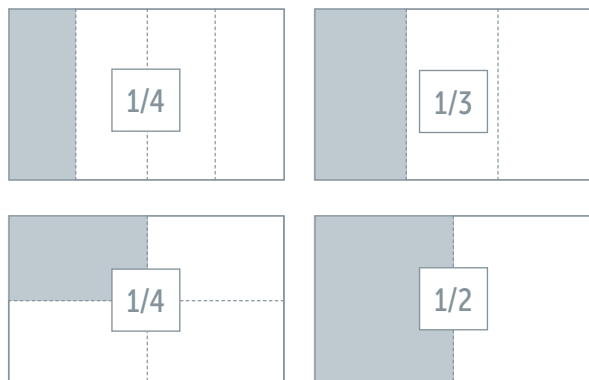
STREAMLINED DESIGN

to fit standard in-flight tray/trolley



The Colpac range of meal boxes are specifically designed and sized to fit Atlas style trays (273x378x15mm) and disposable larders. Each product has a diagram that demonstrates this sizing.

**CUSTOM
DESIGNS**
and construction
available

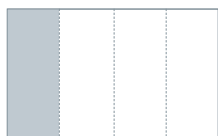


01TVQFT
1/4 Travel Nested Meal box

NEW

✚ 250/230 x 95/75 x 52mm

📦 200



01TVTFT
1/3 Travel Nested Meal box

NEW

✚ 250/230 x 115/95 x 52mm

📦 150



01TVHFT
1/2 Travel Nested Meal box

NEW

✚ 250/230 x 172/152 x 52mm

📦 100

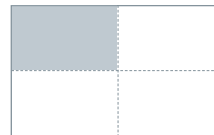


01TVRB3
1/4 Travel Retail Snack Box

NEW

✚ 152 x 82 x 50mm

📦 500



BAKERY

Discover our range of products for the bakery market, from single cake slice boxes to cupcake/muffin boxes.

Delicious pastries and cakes deserve the right display. If you can't find what you are looking for, please ask about our bespoke options for this diverse market.



01CPOKRA (Kraft)
01CPOPLW (White)
Medium Carry Packs

✚ 228 x 122 x 97mm
📦 125



01CP1KR (Kraft)
01CP1PL (White)
Large Carry Packs

✚ 265 x 128 x 180mm
📦 125



04DBAGK (Printed kraft effect)
04DBAGE (Elegance design)
Laminated Deli Bags

✚ 108 x 75 x 218mm
📦 250



ELEGANCE
BLACK

**CAN ALSO BE
HEAT-SEALED**



04TBAGK
Take Away Bag with Handle

✚ 180 x 89 x 216mm
📦 250



**01CAKE1****Single Cake Box**

✚ 80 x 80 x 80mm

📦 500

**01CAKE4****Four Cake Box & Insert**

✚ 150 x 150 x 75mm

📦 250



Use this box for a larger single cake.

**01CAKE6****Six Cake Box & Insert**

✚ 225 x 150 x 75mm

📦 250



Clip two together

**01SPIECE****Small Kraft 'Piece O' Cake' Wedge**

✚ 155 x 65 x 50mm

📦 500

**01LPIECE****Large Kraft 'Piece O' Cake' Wedge**

✚ 145 x 85 x 90mm

📦 500

**01HOMESW****Kraft 'Home Sweet Home' Box**

✚ 185 x 88 x 74mm

📦 500

**01SCB1****Kraft Small Cake Box**

✚ 94/86 x 53/45 x 42mm

📦 500



DRINKS

Key Attributes

- Cup wraps and carriers of varying sizes from 6-12 UK fl.oz.
- Compostable and recyclable material options including lids
- Custom design a wrap to highlight your brand



Our pack, your design!

Bring your product to life with our in-house design and print facility.

Contact us for more information.



CUP CARRIERS



04MPT2CT

Moulded Two Cup Carrier

✚ 218 x 114 x 48mm

📦 250



04MPT4CT

Moulded Four Cup Carrier

✚ 217 x 217 x 48mm

📦 250



ALSO AVAILABLE:

COMPOSTABLE SOUPER CUPS SEE PAGE 41



Cup: 04CMC6K

Lid: 04CML6W

Compostable Cup & Lid

🍷 170ml/ 6 UK fl.oz

📦 1000



Cup: 04CMC12K

Lid: 04CML12W

Compostable Cup & Lid

🍷 350ml/ 12 UK fl.oz

📦 1000



Cup: 04CVCUP8

Lid: 04CVLID8

Col-Cup™ Hot Cup

🍷 225ml/ 8 UK fl.oz

📦 Cup: 500, Lid: 1000



Cup: 04CVCU12

Lid: 04CVLI12

Col-Cup™ Hot Cup

🍷 350ml/ 12 UK fl.oz

📦 Cup: 500, Lid: 1000



CUP WRAPS



04SCCB

Kraft Cup Wrap

🍷 170ml/ 6 UK fl.oz[†]

📦 1000



04MCCB

Kraft Cup Wrap

🍷 225ml/ 8 UK fl.oz[†]

📦 1000



04LCCB

Kraft Cup Wrap

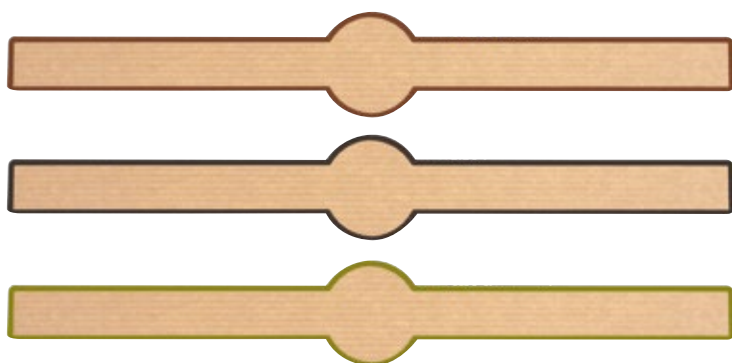
🍷 350ml/ 12 UK fl.oz[†]

📦 1000



[†]Size dependent on manufacturers cup style, please ask for samples before ordering.

LABELS & STICKERS



- **07LSTRBE** (Brown Earth)
- **07LSTRSG** (Slate Grey)
- **07LSTRKH** (Khaki Leaf)

Kraft Watch Strap Label

- ✚ 238 x 18/35mm
- 📦 1000 (per roll)



01BR14

Kraft/ White Reversible Strap

Kraft one side, white the other, adjusts to suit various baguette widths

- ✚ 322 x 40/25mm
- 📦 2000





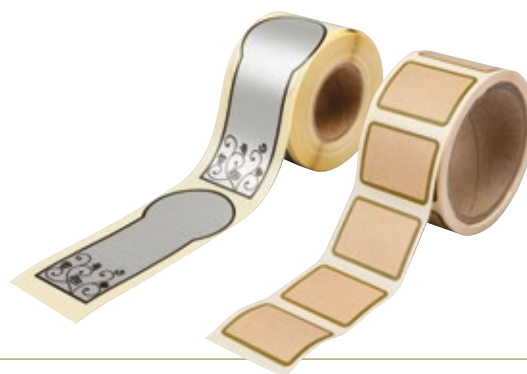
Our pack, your design!

Bring your product to life
with our in-house design
and print facility.

Contact us for
more information.

LABELS SUPPLIED ON A ROLL

Our in-house custom made
label service provides a cost-
effective and speedy way to
apply your own branding to
our stock items.*



07LETDLU

'Let's Do Lunch' Label

✚ Ø 90mm

📦 1000 (per roll)



07LKEYEL

Elegance Keyhole Label

✚ 126 x 42/54mm

📦 1000 (per roll)

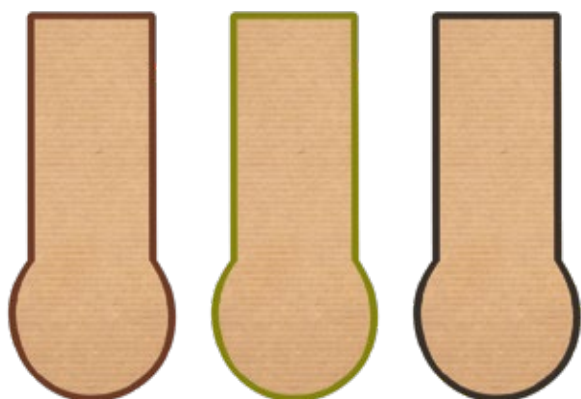


07LRECEL

Elegance Rectangular Label

✚ 38 x 51mm

📦 1000 (per roll)



● 07LKEYBE (Brown Earth)

● 07LKEYSG (Slate Grey)

● 07LKEYKH (Khaki Leaf)

Kraft Keyhole Label

✚ 126 x 42/54mm

📦 1000 (per roll)



● 07LRECBE (Brown Earth)

● 07LRECSG (Slate Grey)

● 07LRECKH (Khaki Leaf)

Kraft Rectangular Label

✚ 38 x 51mm

📦 1000 (per roll)



* Subject to minimum order quantities.

KEY: ✚ Dimensions (LxWxHmm) 📦 Volume/Capacity 📦 Case Size

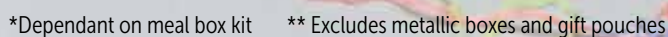
Designed and manufactured in the UK, our food safe party range meets the needs of your celebrations.

The Party & Gift range includes meal boxes, games, gift pouches and combi trays, ideal for parties, catering and events.

- FSC® certified board meal boxes and games and toys**
- Printed on commercially compostable and recyclable board
- Food safe certified
- Cups, scoops and trays coordinated for Jungle Lion & Friends, Monsters and Spots
- Custom design available to highlight your brand



By buying our meal boxes and games, you help take care of the world's forest through sustainable sourcing.
(FSC® CO41147)



DINOSAURS



03PACK68

NEW

Dinosaurs Kit

KIT INCLUDES:

- 100 meal boxes
- 100 card game sheets
- 1 A2 poster

✚ 152/143 x 100/94 x 102mm

📦 100 (mix of 3 box designs)



01MBDINO

Dinosaurs Meal Boxes

✚ 152/143 x 100/94 x 102mm

📦 250 (mix of 3 box designs)



03DINCRD

NEW

Dinosaur Card Game

✚ 297 x 210mm

📦 100 sheets



NEW





01JEEP

Jungle Lion™ Jeep

✚ 240 x 120 x 103mm

📦 250



01MBJUNM

Jungle Lion™ Meal Boxes

✚ 152 x 100 x 102mm

📦 250 (mix of 6 box designs)



03PACKD2

Jungle Lion™ Kit

KIT INCLUDES:

100 meal boxes

100 puzzle books

100 packs of crayons

1 A2 poster

✚ 152 x 100 x 102mm

📦 100 (mix of 6 box designs)



03JUNCOL

Jungle Lion™ Puzzle Fun Books

📦 100 Puzzle fun books



03CRAYON

Pack of Four Crayons

✚ Box: 39 x 95 x 9mm

📦 100

**01TCUPJL****Jungle Lion™ Cup**

✚ 80/60 x 70/110mm

📦 250

**01FCB4JL****Jungle Lion™ Lap Tray**

✚ 180/150 x 114/84 x 44

📦 500

**01SG1JGL****Jungle Lion™ Scoop**

✚ 81/70 x 49/43 x 71/107mm

📦 250

**01MBJCOL****Colour-in Jungle Lion™ Meal Boxes**

✚ 152 x 100 x 102mm

📦 250 (mix of 6 box designs)

**03PACK59****Colour-in Jungle Lion™ Kit****KIT INCLUDES:**

100 meal boxes

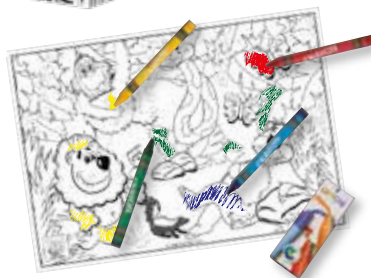
100 A4 colour-in sheets

100 packs of crayons

1 A2 poster

✚ 152 x 100 x 102mm

📦 100 (mix of 6 box designs)

**03JUNCL1****Colour-in Sheet & Crayons**

✚ Colour-in Sheet: 297 x 210mm

📦 100 (1 colour-in design)

**03CRAYON****Pack of Four Crayons**

✚ Box: 39 x 95 x 9mm

📦 100

KEY: ✚ Dimensions (LxWxHmm) 📦 Volume/Capacity 📦 Case Size

MEAL BOX KITS


03PACK72
NEW
Farm Kit
KIT INCLUDES:

- 100 meal boxes
- 100 pop out and build toy sheets
- 1 A2 poster
- + 152/143 x 100/94 x 102mm
- + 100 (mix of 3 box designs)


01MBFARM
Farm Meal Boxes

- + 152/143 x 100/94 x 102mm
- + 250 (mix of 3 box designs)


03FRMCRD
NEW
Pop Out and Build Farm Animals (Cardboard)

- + 297 x 210mm
- + 100 sheets (mixed designs)


03PACK73
NEW
Bugs 'n' Slugs Kit
KIT INCLUDES:

- 100 meal boxes
- 100 Finger Puppet toy sheets
- 100 packs of crayons
- 1 A2 poster
- + 152/143 x 100/94 x 102mm
- + 100 (mix of 3 box designs)


01MBBUGS
Bugs 'n' Slugs Meal Boxes

- + 152/143 x 100/94 x 102mm
- + 250 (mix of 3 box designs)


03BNSCRD
NEW
Bugs 'n' Slugs Finger Puppets (Cardboard)
2 sided sheet, 1 side colour-in, 1 side printed

- + 297 x 210mm
- + 100 sheets



**03PACK69****NEW****Wild Life Kit****KIT INCLUDES:**

100 meal boxes

100 pop out and build toy sheets

1 A2 poster

✚ 152/143 x 100/94 x 102mm

📦 100 (mix of 3 box designs)

**01MBWILD****Wild Life Meal Boxes**

✚ 152/143 x 100/94 x 102mm

📦 250 (mix of 3 box designs)

**03WLDCRD****NEW****Pop Out and Build
Wildlife Animals
(Cardboard)**

✚ 297 x 210mm

📦 100 sheets (mixed designs)

**03PACK51****Teddy Bears Kit****KIT INCLUDES:**

100 meal boxes

100 activity books & crayons

1 A2 poster

✚ 152/143 x 100/94 x 102mm

📦 100 (mix of 3 box designs)

**01MBTEDD****Teddy Bears Meal Boxes**

✚ 152/143 x 100/94 x 102mm

📦 250 (mix of 3 box designs)

**03TEDDBK****Teddy Bears Activity Book**

📦 100 (1 book design)

**03CRAYON****Pack of Four Crayons**

✚ Box: 39 x 95 x 9mm

📦 100

MEAL BOX KITS



03PACK57

The Tucker Team Kit

KIT INCLUDES:

- 100 meal boxes
- 100 activity books
- 100 packs of crayons
- 1 A2 poster
- ✚ 152 x 100 x 102mm
- 📦 100 (mix of 6 box designs)



01MBAUST

The Tucker Team Meal Boxes

- ✚ 152 x 100 x 102mm
- 📦 250 (mix of 6 box designs)



03AUSCOL

The Tucker Team Activity Book

- 📦 100 (1 book design)



03CRAYON

Pack of Four Crayons

- ✚ Box: 39 x 95 x 9mm
- 📦 100



03PACK71

NEW

Pirate Kit

KIT INCLUDES:

- 100 meal boxes
- 100 Masks & Hats
- 1 A2 poster
- ✚ 152/143 x 100/94 x 102mm
- 📦 100 (mix of 3 box designs)



01MBPIRA

Pirate Meal Boxes

- ✚ 152/143 x 100/94 x 102mm
- 📦 250 (mix of 3 box designs)



03PIRCRD

NEW

Pirate Masks & Hats (Cardboard)

- 📦 100 (mixed designs)





UNDER THE SEA

03PACK70

NEW

Under the Sea Kit

KIT INCLUDES:

- 100 meal boxes
- 100 Finger Puppet toy sheets
- 100 packs of crayons
- 1 A2 poster

✚ 152/143 x 100/94 x 102mm

📦 100 (mix of 6 box designs)



01MBUNDE

Under the Sea Meal Boxes

✚ 152/143 x 100/94 x 102mm

📦 250 (mix of 6 box designs)



03SEACRD

NEW

Under the Sea Finger Puppets (Cardboard)

2 sided sheet, 1 side colour-in, 1 side printed

✚ 297 x 210mm

📦 100 sheets (mixed designs)



MEAL BOXES



01MBMNST

Monster Party Meal Boxes

+ 152/143 x 100/94 x 102mm

250 (mix of 3 box designs)



01MCTNMN

Monster Party Mini Carton

+ 77/62 x 77/62 x 95mm

250



01SG1MST

Monster Party Scoop

+ 81/70 x 49/43 x 71/107mm

250



01FCB4MN

Monster Party Lap Tray

+ 180/150 x 114/84 x 44

500



SPOTS



01MBSPOT

Spotty Meal Box

+ 152/143 x 100/94 x 102mm

250



01SG1SPT

Spotty Scoop

+ 81/70 x 49/43 x 71/107mm

250



01FCB4ST

Spotty Lap Tray

+ 180/150 x 114/84 x 44

500



01MCTNSP

Spotty Mini Carton

+ 77/62 x 77/62 x 95mm

250



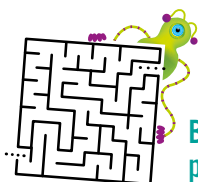


01MBALIE

Space Aliens Meal Boxes

✚ 152/143 x 100/94 x 102mm

📦 250 (mix of 3 box designs)



Boxes feature fun puzzles and games!



01MBFAIR

Fairytales Meal Boxes

✚ 152/143 x 100/94 x 102mm

📦 250 (mix of 3 box designs)



01MBRACE

Race Time Meal Boxes

✚ 152/143 x 100/94 x 102mm

📦 250 (mix of 3 box designs)



MEAL BOXES



01MBWOOD

Woodland Meal Boxes

✦ 152/143 x 100/94 x 102mm

📦 250 (mix of 3 box designs)



01MBCIRC

Circus Meal Boxes

✦ 152/143 x 100/94 x 102mm

📦 250 (mix of 3 box designs)



01MBCREA

Creature Club Meal Boxes

✦ 152/143 x 100/94 x 102mm

📦 250 (mix of 6 box designs)





01MBFOOT FOOTBALL

Football Meal Box

✚ 152/143 x 100/94 x 102mm

📦 250



01MBUNIO UNION JACK FLAG

Union Jack Flag Meal Box

✚ 152/143 x 100/94 x 102mm

📦 250



01MBTREA TREASURE CHEST

Treasure Chest Meal Box

✚ 152/143 x 100/94 x 102mm

📦 250



SPOOKY TIME

01MBHAL

'SPOOKY TIME' Meal Boxes

✚ 152/143 x 100/94 x 102mm

📦 250 (mix of 3 box designs)



01MBXMS

CHRISTMAS Meal Boxes

✚ 152/143 x 100/94 x 102mm

📦 250 (mix of 3 box designs)



01MBESTR

EASTER Meal Boxes

✚ 152/143 x 100/94 x 102mm

📦 250 (mix of 3 box designs)



MEAL BOXES



**Any colour,
any design!**

Bring your product to life with our in-house design and print facility.

**Contact us for
more information.**

Coloured Meal Boxes (Colour printed)

✚ 152/143 x 100/94 x 102mm
(full height including handle 165mm)

📦 250



01MBWHIT
White



01MBKRAF
Kraft



01MBBLAC
Black



01MBRED
Red



01MBORAN
Orange



01MBYELL
Yellow



01MBLIME
Lime



01MBBLUE
Blue



01MBLBLU
Light Blue



01MBPURP
Purple



01MBPINK
Pink

01MBSILM (Silver) 01MBGOLM (Gold)

Metallic Meal Boxes

✚ 152/143 x 100/94 x 102mm
(full height including handle 165mm)

📦 250



01GPSILV (Silver) 01GPGOLD (Gold)

Metallic Gift Pouches

✚ 190 x 150 x 80mm

📦 250



01GPKRAF (Kraft) 01GPBLK (Black) 01GPWOOD (Woodland)

Gift Pouches

✚ 190 x 150 x 80mm

📦 250



COMBI TRAYS

**01JEEP****Jungle Lion™ Jeep**

✚ 240 x 120 x 103mm

📦 250

**01CINCOA****Cinderella Coach**

✚ 240 x 120 x 103mm

📦 250

**01BOAT****Sun 'n' Fun Boat**

✚ 320 x 120 x 100mm

📦 250

**01PIR1****Pirate Galleon**

✚ 319 x 120 x 90mm

📦 250

**01YC1****Yellow Taxi Cab**

✚ 295 x 120 x 55mm

📦 250

**01BM1RE****Red Convertible**

✚ 295 x 120 x 55mm

📦 250

**01PCAD3****Pink Cadillac**

✚ 295 x 120 x 55mm

📦 250



MACHINERY & LONGER/EXTENDED SHELF LIFE PACKAGING

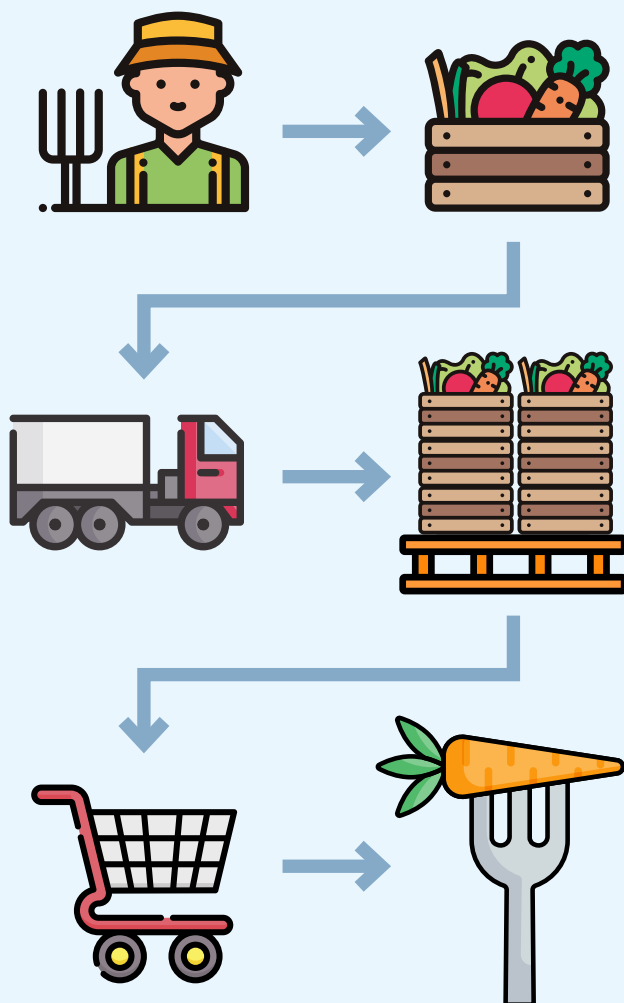
Alongside our extensive packaging expertise, Colpac offers a range of machinery options to enhance the shelf life of packaging contents.

PACKAGING AND FOOD WASTE

Food waste is a huge issue with over 10 million tonnes of food wasted annually in the UK alone. Whilst one solution to this problem would be to only produce the food that can be used and to redistribute excess, there are ways that packaging can impact on reducing food waste.

Packaging is an indispensable element for the food industry. The key role for any packaging solution is to protect and preserve the product as well as sell it. Packaging can extend the freshness for days (depending on contents). This extension of shelf life works through reducing the content exposure to oxygen thus preserving product. WRAP research has shown that extending product life by just one day could save 250,000 tonnes of food waste in the UK annually.

Food waste occurs throughout the supply chain, from the production stage to final household consumption.



FAO, UN - Oct 2019

HEAT SEAL PACKAGING - LONGER SHELF-LIFE

Over 10% of our stock products are suitable for heat sealing with many more adaptable should it be required. We offer specialised machinery to accomplish this, from tabletop units for small enterprises to inline higher volume tray and conveyor sealers for food manufacturers.

As pioneers of heat seal technology, we are constantly evolving our packaging and machinery offering. This involves sourcing and trialling new materials. This is demonstrated by our Zest™ Heat Seal Eco-Packaging range (page 16) where heat seal is achieved without the need for additional plastic or laminates, making it one of our most sustainable ranges. Our Stagione® range, a unique shaped pack, can be sealed to provide tamper-evidence without labels (see page 51).



**SANDWICH
PACKS**

PAGE 16



**SQUARE-CUT
SANDWICH
PACKS**

PAGE 16



CLASP

PAGE 21



**WRAP
PACKS**

PAGE 22



BAGUETTE PACKS

PAGE 25



SALAD BOXES

PAGE 33



TRAYS

PAGE 51



POTS

PAGE 40

MODIFIED ATMOSPHERE PACKAGING (M.A.P.) – EXTENDED SHELF-LIFE

Modified Atmosphere Packaging (M.A.P.) is a shelf-life extension technique for food, which is achieved by replacing the oxygen with a protective gas mix within a sealed pack.

The removal of oxygen inhibits the growth of microbes and slows down the process of food decay. Together with lowering the storage temperature and maximising the levels of hygiene during production and packing, the product will stay fresh for significantly longer.

The ColMAP™ range of packaging in paperboard consists of sandwich packs trays and boxes. These are manufactured from recyclable paperboard laminated with a high barrier, multi-layer film, suitable for food grade gases.

1/3

of all food produced is lost or wasted from **farm to fork** according to the Food and Agriculture Organisation (F.A.O.)



In the UK we waste

over **10**
MILLION
TONNES
of food in a year



Whilst one in nine people remain malnourished, land equal to the size of China is used to grow food that is lost or thrown away.

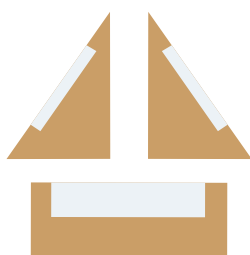
Every year a third of the world's food is wasted. It adds up to around



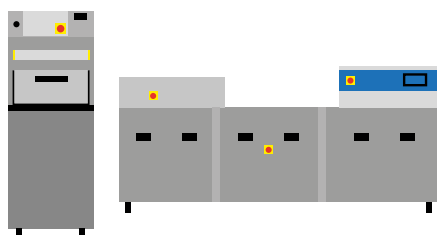
1.3
BILLION
TONNES

Sources: WRAP, Champions 12.3 report and The Food Rush

OUR PROCESS



**Select Colpac
packaging**



**Select Colpac machine
and tooling**



**Trial/testing
at your site**

M.A.P. PACKAGING

Our ColMAP™ range of packaging and machinery has been designed and developed over several years by our team of experts. We have installed M.A.P. sealing machinery lines with food manufacturers and processors around the world.

- M.A.P. can increase the expected shelf-life by up to 10+ days* depending on ingredients and supply chain conditions
- A longer shelf-life means that the product can be shipped over longer distances, which can increase the range of distribution and reduce the number of deliveries.
- The achieved extended shelf life means there will be less frequent product replacement requirements which can enable supply chain efficiencies and increased on-shelf availability
- ColMAP™ packaging typically contains only 15% of the plastic (by weight) of the equivalent full plastic packs.



01SP3MAF (Printed kraft effect)

M.A.P. Salad Box

✚ 175/155 x 135/115 x 65mm

🔹 1340ml/ 47 UK fl.oz

📦 250



01ST29KE (Printed kraft effect)

77/65 M.A.P. Sandwich Pack (end opening)

suitable for 2 deep-filled sandwiches

✚ 119.5 x 77/65 x 119.5mm

📦 500



01ST17K (Printed kraft effect)

77/65 M.A.P. Sandwich Pack (side opening)

suitable for 2 deep-filled sandwiches

✚ 119.5 x 77/65 x 119.5mm

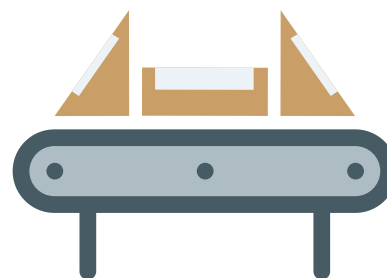
📦 250



**Customer
laboratory testing**








**Specification
sign off**



Full production

*dependent on contents



Order code	08KFC200	08COLCUA	08COLCUB	08SR230	08MAXI
Machinery	Impulse Sealer	Auto Cup & Pot Sealer 82-97mm	Auto Cup & Pot Sealer 110-117mm	SR230 Sealer	Maxi Sealer
Type	Sealing	Sealing	Sealing	Sealing	Sealing
Use	Counter Top	Counter Top	Counter Top	Catering & Production Entry	Catering & Production Entry
Production/Speed	Variable	up to 400 units/h	up to 400 units/h	up to 400 units/h	up to 400 units/h
Sealing Area Capacity (mm)	Up to 200 (w)	82-97 Ø	110-117 Ø	190x200x95 (h)	200x260
Dimensions (mm)	310x80x140	400x380x600	400x380x600	320x500x460	550x270x310
Weight (kg)	2	13	13	25	20
PE	●	●	●	●	●
PP	●	●	●	●	●
Compostable					
Laminated				●	●
M.A.P.					
Packaging	Clasp® and Sandwich bags	Hot Pots, Souper Cups, Multi-food Pots & PET/PP Cups	Hot Pots, Souper Cups, Multi-food Pots & PET/PP Cups	Hot Pots, Souper Cups, Multi-Food Pots, C-vis® Trays and Film-Liddable Packs	C-vis® Trays, Heat-Seal, Film-Liddable and Laminated Packaging
Scan to watch Video					

COUNTER TOP

ColSeal®
impulse sealer

08KFC200**Impulse Sealer**

- ✚ 310 x 80 x 140mm
- 🕒 variable
- 📏 up to 200mm in width

SCAN TO
WATCH VIDEOIntegral sliding
cutter blade
allows seal
or seal & cutThe **Impulse Sealer** can seal:

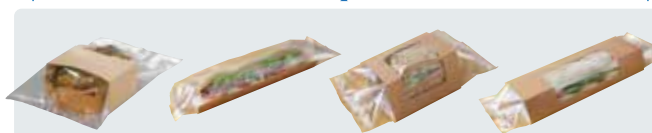
PP Film



PE Film



Baguette bags



Film to board packs

clasp^{SEAL}



NEW

NEW



ColMAP™

Order code	08PGINLB 08BASEPG (base)	08ELECTR 08BASEPG (base)	08SL1200	08SAVGAS (vacuum & gas)	08COLSLA
Machinery	PGINOX Pneumatic Floor Standing Sealer	Electromec Electromechanical Floor Standing Sealer	SE1200 Automatic Sealer	Savvie Sealer	Slalom 7 Sealer
Type	Sealing	Sealing/ Film Sealing	Sealing/ Film Sealing	Sealing & M.A.P.	M.A.P.
Use	Production Model	Production Model	Production Model	Production Model	Production Model
Production/Speed	up to 500 units/h	up to 500 units/h	20 cycles/min	up to 500 units/h	M.A.P. 5 cycles/min Non M.A.P. 10 cycles/min
Sealing Area Capacity (mm)	320x420 (w)	320x420 (w)	Made to order	260x400 (w)	380x265
Dimensions (mm)	600x600x1480 (with base)	600x530x1480 (with base)	2500x864x1183	580x900x1325	3800x1360x1400
Weight (kg)	80	80	150	175	700
PE	●	●	●	●	●
PP	●	●	●	●	●
Compostable				●	●
Laminated	●	●	●	●	●
M.A.P.				●	●
Packaging	C-vis® Trays, Heat-Seal, Film-Liddable and Laminated Packaging	C-vis® Trays, Heat-Seal, Film-Liddable and Laminated Packaging	Heat-Seal and Laminated Packaging	C-vis® Trays, Heat-Seal, Film-Liddable, Laminated & M.A.P. Packaging	C-vis® Trays, Heat-Seal, Film-Liddable, Laminated & M.A.P. Packaging
Scan to watch Video					

SCAN TO
WATCH VIDEO

COUNTER TOP

ColSeal®
auto cup & pot sealer**08COLCUA** (Ø 82-97mm cup/pot diameter)**08COLCUB** (Ø 110-117mm cup/pot diameter)**Auto Cup & Pot Sealer**

✚ 400 x 380 x 600mm

⌚ variable and automatic cycle, up to 400 units per hour, subject to load and reload

📏 Top plate, fixed diameter 100mm or 130mm

Ideal for sealing
our Cups & Pots
with a standard
heat-seal filmWith interchangeable tooling, the **Auto Cup & Pot Sealer** can seal:Peelable
filmSavori™
Hot PotsSouper
Cups470ml Multi-
food pot

PET/PP cups

KEY: ✚ Dimensions (LxWxHmm) ⌚ Production Speed 📏 Sealing Area Capacity



SCAN TO
WATCH VIDEO



ColSeal®

SR230

08SR230

SR230 Sealer

- ✚ 320 x 500 x 460mm (excluding lever)
- 🕒 variable, up to 400 units per hour, subject to load and reload
- 📏 190 x 200 x 95mm

Larger models available for sealing larger pots.



Cups, Pots & Trays can be sealed with profile thumb tabs for easy opening

With fixed size film sealing, the **SR230 Sealer** can seal:



Peelable film



Hot Pots



Souper Cups



Multi-food pots



C-vis® Trays



Film-liddable packs

CATERING & PRODUCTION ENTRY MODEL

ColSeal®

maxi

08MAXI

Maxi Sealer

- ✚ 550 x 270 x 310mm (excluding lever)
- 🕒 variable, up to 400 units per hour, subject to load and reload
- 📏 200 x 260mm

SCAN TO
WATCH VIDEO



NEW



Optional double sided tool allows for two different pack sizes to be sealed.



With interchangeable tool draw, the **Maxi Sealer** can seal:



PE/ cellulose window



Trays



Stagione®



Zest™ Heat Seal and Heat seal packaging range



Film-liddable packs



Laminated sandwich packs



PRODUCTION MODELS

ColSeal®

PGINOX

SCAN TO
WATCH VIDEO



08PGINLB (bench model)

08BASEPG (base)

08PGCOM (compressor)

Base is suitable for PGINOX and ELECTRO MEC machines

PGINOX Pneumatic Floor Standing Sealer

✚ **Bench model:** 600 x 600 x 450mm

With base: 600 x 600 x 1480mm

🕒 variable, up to 500 units per hour,
subject to load and reload

📏 320 x 420mm wide

Air supply: Compressor supplied
separately or customer supply
compressed air



Bench Model



Compressor
in base unit
(08PGCOM)

With interchangeable tooling, the **PGINOX Sealer** can seal:



PE/ cellulose
window



Trays



Stagione®



Zest™ Heat Seal and Heat seal packaging range



Film-liddable
packs



Laminated
sandwich packs

PRODUCTION MODELS

NEW

ColSeal®

Electro Mec

SCAN TO
WATCH VIDEO**08ELECTR** (bench model)**08BASEPG** (base)*Base is suitable for PGINOX and ELECTRO MEC machines***ELECTRO MEC Electromechanical
Bench Standing Sealer**✚ **Bench model:** 520 x 620 x 700mm**With base:** 520 x 620 x 1500mm⌚ variable, up to 400 units per hour,
subject to load and reload

📏 320 x 420mm wide

Tooling storage
in base unitNO NEED FOR
COMPRESSED
AIR SUPPLY

Bench Model

With interchangeable tooling, the **Electromec Sealer** can seal:PE/ cellulose
window

Trays



Stagione®



Zest™ Heat Seal and Heat seal packaging range

Film-liddable
packsLaminated
sandwich packs



PRODUCTION MODEL

ColSeal[®]
SL1200

NEW



08SL1200

SL1200 Automatic Sealer

- ✚ 2500 x 864 x 1183mm
- 🕒 20 cycles per minute
- 🔧 Made to order (per product)

Film sealing option

Day/date coder optional

Air supply: Compressor supplied separately or customer supply compressed air

SCAN TO
WATCH VIDEO



With interchangeable tooling, the **SL1200 Sealer** can seal:



PE/ cellulose
window



Zest™ Heat Seal and Heat seal packaging range



Stagione[®]



Pots



PRODUCTION MODEL

ColSeal[®]

savvie

08SAVGAS

Savvie Sealer

- ✚ 580 x 900 x 1325mm
- 🕒 variable, up to 500 units per hour, subject to load and reload
- 📏 260 x 400mm wide

Air supply: Vacuum pump or integral compressor included; subject to customer confirmation

SCAN TO
WATCH VIDEO



With interchangeable tooling, the **Savvie Sealer** can seal:



PE/ cellulose
window



Zest™ Heat Seal and Heat seal packaging range



Stagione®

ColMAP™



Film-liddable
packs



M.A.P. Packs



M.A.P. Trays



C-vis®
M.A.P. Trays

ColMAP™

The technology of Modified Atmosphere Packaging (M.A.P.) replaces the normal atmosphere with a mix of gases.

The gas mixture inside the packaging depends on the components of the product. Our ColMAP™ machinery is specifically designed to use modified atmosphere with our paperboard packaging.

We can adapt our packaging solutions and our machinery to your special requirements making sure you get the best result for your products.

MODIFIED ATMOSPHERE PACKAGING (M.A.P.)



PRODUCTION MODEL

ColMAP™ slalom 7

SCAN TO
WATCH VIDEO



08COLSLA

Slalom 7 SEALER

- ✚ 3800 x 1360 x 1400mm
- 🕒 M.A.P. 5 cycles/min
Non M.A.P. 10 cycles/min
- 📏 380 x 265mm

Air supply: Customer supply compressed air, vacuum pump include (outside of machine)



Interchangeable tooling

With interchangeable tooling, the **Slalom 7** can seal:

ColMAP™

HEAT SEAL



M.A.P.
laminated film



01ST17K

01ST29KR

01SP3MAF



M.A.P. Trays



Stagione®



C-vis® Trays



Film-liddable packs

INDEX

BAKERY

Cake Boxes	59
Carry Pack	58

CHILLED FOOD TO GO

Combione®	36-37
Fuzione®	34-35
Heat Seal Salad Boxes	33
Laminated Zest™ Deli Box	31
M.A.P. Salad Boxes	33
Multi-Food Pots	38
Salad Boxes	31-33
Zest™ Salad Boxes	31

DELIVERED FOOD

Combination Platters	54
Let's Do Lunch	54-55
Platter Box with Window	55
Platter Sleeve no Window	55
Platter Sleeve with Window	55
Platters Bases & Inserts	55

DRINKS

Cups	61
Cup Carriers	61
Cup Wraps	61

HOT FOOD TO GO

Boxes	42-47
Compostable Souper-Cups	41
Cones & Scoops	52-53
C-vis®	48
Microwaveable Souper Cups	41
Microwaveable Trays	49
Newsprint – Boxes	47
Newsprint - Open Trays	51
Newsprint Greaseproof Paper	49
Open Trays	48-51
Savori™	29,40,51
Souper Cup Wraps	41
Ssupa Snax – Boxes	47
Ssupa Snax - Cones & Scoops	52-53
Ssupa Snax - Open Trays	49
Stagione® Trays & Lids	39,51
Tuck-Top Food Tubs	44

LABELS & STICKERS

54,62-63

MACHINERY

ColSeal®	82-88
ColMAP™ Slalom 7	89

PARTY & GIFT

Cartons, Scoops, Cups & Trays	67,72
Combi Trays	77
Gift Pouches	76
Meal Box Kits	65-71
Meal Boxes	65-76
Party Books & Toys	66-71

SANDWICH PACKS

Appealable - Self-Seal	16
Bags & Inserts	25-29,58
Baguette & Bagel Packs	24-25
Clasp® - Film to Board	18-21
Elegance Black	15,22
Greaseproof Paper	27
Heat-Seal Sandwich Packs	17
M.A.P. - Sandwich Packs	17
Pockets & Pillow Packs	23,29
Wrap Packs	22-23
Sandwich Packs Same Day	14-15
Square-Cut Sandwich Packs	15,17
Zest™ - Heat Seal	16
Zest™ Eco-Packaging	15

TRAVEL PACKAGING

Boxes	57
-------	----

CONTACT US



+44 (0)1525 712 261



sales@colpacpackaging.com



For our full Terms & Conditions of Sale visit:

www.colpacpackaging.com/terms

View our full range and keep up-to-date with our latest news and offers at

www.colpacpackaging.com



ICONS

KEY



COMPOSTABLE

The materials in these products are industrially compostable within 90 days (EN 13432 standard).



COMPOSTABLE (16 WEEKS)

The materials in these products are industrially compostable within 16 weeks.



COMPOSTABLE WINDOW

The film material used for these windows is industrially compostable within 90 days (EN 13432 standard).



RECYCLABLE

The plastic lids/window films used for these products are recyclable.



RECYCLED LID

The lids for these products are made from recycled plastic material (rPET).



RECYCLABLE BOARD

The board for these products is recyclable.



RECYCLED BOARD

The board for these products is made from recycled material.



SUITABLE FOR MICROWAVE

The product is suitable for microwave use.



SUITABLE FOR OVEN

The product is suitable for oven use.



SUITABLE FOR FREEZER

The product is suitable for freezer use.



CUSTOM MADE PRINT

The product can be customised to your design/artwork.



SHORT SHELF-LIFE

Products with a shorter shelf-life.



LONGER SHELF-LIFE

Product with a longer shelf-life.



EXTENDED SHELF-LIFE

Products with an extended shelf-life.

Although Colpac makes every reasonable attempt to test its products for a range of typical applications, Colpac cannot control the specific applications for which its products are used. Therefore, it is the customer's responsibility to test the suitability of a Colpac product for the customer's specific application.



FSC
www.fsc.org

MIX

Paper from
responsible sources

FSC® C005739

**This catalogue is printed
on FSC-certified paper.**

For our full environmental policy and more
information on our green credentials visit
www.colpacpackaging.com/our-commitment/

All our paperboard material is purchased from managed forests, in line with EU Timber Regulation (EUTR).

Measurements in millimetres (mm)



BRITISH DESIGNER & MANUFACTURER DELIVERING INNOVATIVE FOOD PACKAGING SOLUTIONS WORLDWIDE



[®] colpac

FOOD PACKAGING CREATIVITY

Colpac Ltd. Enterprise Way, Maulden Road,
Flitwick, Bedfordshire, MK45 5BW, England, UK.

Tel: +44 (0) 1525 712 261

Fax: +44 (0) 1525 718 205

Email: sales@colpacpackaging.com

www.colpacpackaging.com

